

Historic, Archive Document

Do not assume content reflects current scientific knowledge, policies, or practices.

62.43

A
GUIDE
To The Best
HARDY PLANTS



SPRING 1930

THE DANIELS NURSERY

FRANC P. DANIELS, Proprietor

Long Lake

::

Minnesota

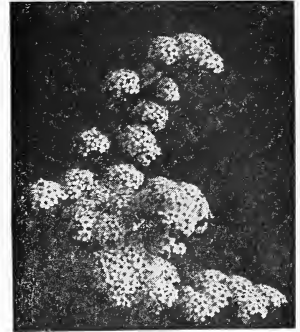
DANIELS "ALL SEASON" FLOWERING SHRUB COLLECTION



Double Flowering Plum

All Summer

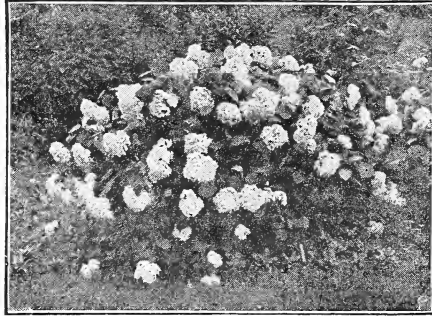
Beautiful masses of snowy white flowers, attractively overlaying the large, deep green leaves of this beautifully formed, rather compact shrub make *Hydrangea Hills of Snow* (*Snowball Hydrangea*) the most cherished of summer-long blooming shrubs.



Spirea Van Houttei

Early Spring

Fleecy clouds of soft rose and white covering the twigs of this dainty little "tree" while other plants are yet bare of growth, make *Double Flowering Plum* (*Prunus Triloba*) a real delight and easily the best of the early spring blooming shrubs.



Hydrangea Hills of Snow

Late Spring

Masses of billowy white flowers covering its gracefully arching branches like a late spring snowfall is one reason why *Bridal Wreath* is the most popular, most used and the most loved of all hardy shrubs.

These three finest shrubs—Daniels special bargain only \$1.25

Extra Special PRICE, when included with order for other nursery stock, totalling \$3.00 or more only.... **\$1.00**

Your Greatest Safeguard in Buying Plants

IS TO SECURE THEM FROM A NURSERYMAN OF PROVEN INTEGRITY AND WITH A REPUTATION FOR FAIR DEALING

The Daniels Nursery is owned and operated exclusively by Franc P. Daniels. You will be interested in knowing these facts about him: Member of four leading nurserymen's associations—standing in his profession; himself an extensive fruit grower—understands the grower's problems; past ten years president of the Minnetonka Fruit Growers' Association—esteem of his fellow growers; graduate of the Minnesota College of Agriculture—technical training; for the past fifteen years a part-time instructor in fruit growing, nursery and other horticultural subjects at University Farm School—extensive and up-to-the-minute horticultural knowledge and recognition of same. And last, he is interested in every sale—says it must be so satisfactory to the purchaser that he'll come back for more. Can you afford to buy where the "personality" factor is less in your favor?

DANIELS PLANTS WILL GROW—WILL GIVE YOU REAL RESULTS.

Can you afford less dependable stock at any price?



1930

There is keen pleasure in working with growing things! This past year has been one of real growth here at Long Lake,—growth of the finest lot of plants I have ever had to offer you,—and a remarkable growth in business.

This splendid increase in business is due to our long established policy of "The finest of plants of the best varieties at planters' prices,—sold with a Satisfied Customer Guarantee." In purchasing the things you want to plant in your yard, orchard and garden from me you are assured this same maximum degree of satisfaction upon which the business of The Daniels Nursery is founded.

I wish to express my sincere appreciation to those of you who have ordered from me in the past, and to assure you that your future business will have the same painstaking attention that it has always received. I hope that I may receive at least a trial order from those of you who have not ordered before, for I am sure that you will be as delighted with all your dealings with me as have been my former customers.

I hope that you will find this little booklet of real value. In writing it I have kept one thought uppermost in my mind—that all statements and descriptions must be truthful and accurate. I have written every word of it myself, giving you my own horticultural convictions and ideas just as if I were conversing with you.

And please bear this in mind,—my entire organization is at your service,—with service and stock (at low prices) that will say to you more eloquently and forcefully than can printed or spoken words,—"Come back again and once more enjoy real, dyed in the wool, honest to goodness nursery stock satisfaction."

Sincerely,

Frene P. Daniels

N. B.—I am printing my picture above, not because I am proud of it, but because most people like to know what the man they are dealing with looks like.

Some years ago we introduced to you this new mythical "member of the firm."

LITTLE DANNY DO-IT

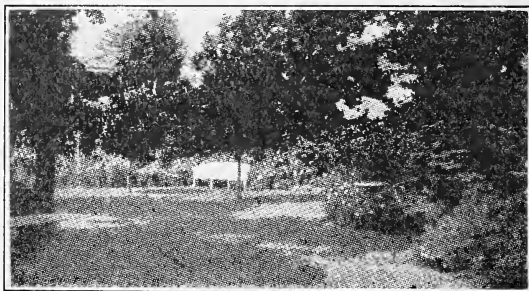
The Horticultural Hustler.



DANNY SAYS:

It sure keeps me hustling to keep up with the rapid development of the boss's business. We've been mighty busy this year, growing the finest lot of stock we ever had to offer you,—pruning, training and working all year to have the most perfect plants obtainable. You'll like 'em.

Beautified Homes are Happy Homes



It's not a home until it's planted! The truth of these words is being so widely recognized that now everywhere in city and country, is found a wave of enthusiasm for making homes more enjoyable, more livable and more attractive for both young and old through the proper use of planting materials.

Every Day You Will be Judged by the Appearance of Your Home Grounds

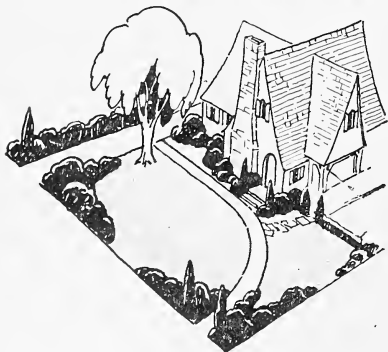
The world judges by appearances! Make no mistake about it, **you** are being judged every day by the appearance of your home grounds.

Particularly is this true now, when a great vogue for beautiful home surroundings is sweeping the nation. Nowadays well planted and well kept home grounds are as much a part of the trend of the times as are modern motor cars and fashionable apparel.

Do Your Home Grounds Make the Kind of Impression You Wish Upon Your Friends, Neighbors and Passers-by?

Are you giving proper consideration to the impression your home grounds make? Often the proper placing of a few additional trees, shrubs, vines and flowers will bring about a marvelous transformation in the beauty and attractiveness of the home.

Are Your Children Growing Up Among Beautiful Growing Things?



Everyone recognizes the fact that beautiful surroundings and environment play an important part in shaping the character of the child. What **do you** remember about the old homestead? Rather than the house, barn or sheds is it not the old apple tree, the fragrant lilacs, or Mother's rose bushes and brilliantly flowered perennials? Proper planting of your home grounds will insure that your children grow up under the influence of an environment so beautiful that it will leave an indelible stamp on their characters.



DANNY SAYS:

All kiddies love growing things! And what joy they get from the ownership and care of certain plants "all their own." A splendid training in both nature and responsibility.

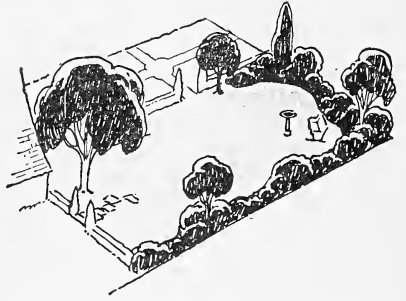
The Vogue of the Outdoor Living Room is Sweeping the Nation

The old neglected back yard has joined the ranks of the Dinosaur, the Mastodon and the horse and buggy of ancient history. In its place, those who take pride in their surroundings are building glorious outdoor living rooms.

Seldom has there been a movement which so deeply affects the happiness and welfare of all—and seldom one so easily obtainable, for the creation of a beautiful outdoor living room is a simple matter and need not be expensive. Moreover, unlike a room within a house, it increases in beauty and value each year.

In privacy you may enjoy yourself to your heart's content, for the grass has provided a soft, velvety carpet of green, trees, shrubs and evergreens have enclosed your room, screening unsightly views, and with the aid of hardy flowers have contributed color, fragrance and beauty that make your modern outdoor living room a place of beauty, rest and contentment with a never ending appeal for each member of the family.

Here the children may play in safety, free from the dangers of street traffic and here you may rest and relax at the end of the day. Plan your outdoor living room now. May we help you?

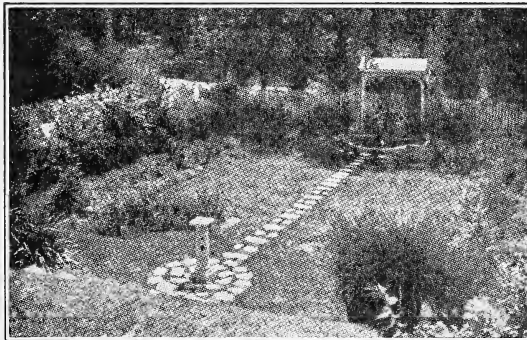


And What's More—Planting Adds Value to Your Property

You are actually paid for making your home attractive. Not alone by the added pleasure and satisfaction of living in cheerful surroundings, but each tree, shrub, vine and flower adds far more than it costs to the actual cash value of your property.

Every real estate authority will tell you that the well planted place will not only sell for more, but will also attract more buyers than the place that is poorly planted or not planted at all. Planting is a sound investment yielding continuous dividends.

Let Us Help You Achieve More Beautiful Home Surroundings



Proper planting is the first step in achieving a completed home picture. The realization comes with the planting of shrubs, trees and flowers. Our service consists not only of furnishing you the finest of plant materials at very moderate prices but we are glad to prepare plans and make planting suggestions without charge. At your request our representative will be glad to call or if you prefer, just write us and send a rough sketch of your home grounds for our suggestions. We are eager and glad to assist you in every possible way in planning an arrangement that will give you the utmost of satisfaction at a very reasonable cost. Why not sit down now and write us regarding your planting problems? We will be delighted to assist you.



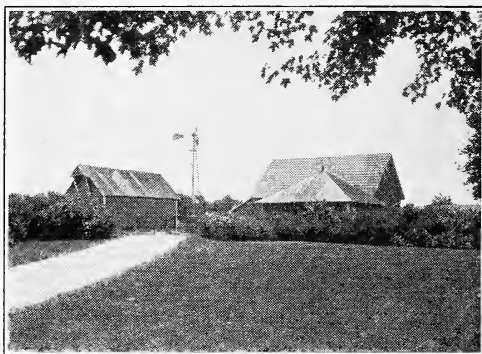
DANNY SAYS:

There's real fun in planning the home grounds. If you need help just write us. Our expert landscape department will be delighted to make helpful suggestions,—or to prepare plans for you if you wish. Our booklet on proper landscape arrangement is free for the asking.

THE NORTHWEST'S BEST HARDY SHRUBS

Ornamental shrubs are the backbone of all landscape plantings. Whether one is building an outdoor living room, constructing a foundation planting, or making other border plantings,—hardy shrubs are indispensable. Much beauty and individuality may be secured through the varying heights, forms, flowers, barks and foliage found in the different varieties.

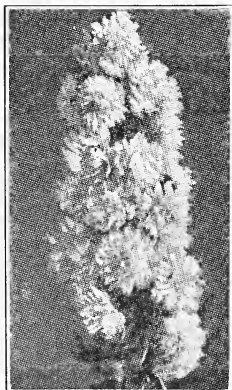
Of the hundreds of different shrubs the ones we are growing have proven themselves the cream of those suited to the Northwest. Every one has its special merit. By selecting the proper assortment for each situation one can build oneself a home landscape of surpassing charm and beauty.



Our plants are infinitely superior to the so called "bargain" shrubs so frequently offered where one has no assurance of size and quality, but is simply offered some meaningless description as "2 year old," double X or triple X. The plants we offer are well grown with good tops and roots—unusually fine plants for the low price we ask.

ALMOND (Pink Flowering)—6 ft. A very beautiful early spring flowering shrub of medium height. Throughout the season it presents an attractive appearance, but is of greatest value in the early spring when its twigs are entirely covered with intensely double, sweet scented blooms that have somewhat the appearance of miniature roses. **2 to 3 ft., 65c each; \$6.50 for 12.**

RED LEAVED BARBERRY—2 ft. A splendid improvement over the common Japanese Barberry. The foliage is an attractive purplish-red color throughout the entire season. **12 to 15 inch, 75c each.**



Pink Almond

THUNBERG'S or JAPANESE BARBERRY—2 to 3 ft. A beautiful dwarf shrub, free from rust. The green foliage turns to rich crimson in fall. Masses of bright scarlet berries hang from the twigs through fall and winter. **18 to 24 inch, 35c each; \$3.50 for 12. 24 to 36 inch (extra heavy) 45c each; \$4.50 for 12.**

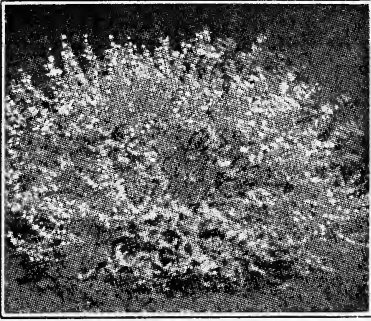
BUCKTHORN—15 to 20 ft. A hardy, vigorous, attractive shrub that may be trimmed to any height. Profusely borne clusters of black berries hang on into winter. Splendid in heavy group plantings. **2 to 3 ft., 30c each; \$3.00 for 12. 3 to 4 ft., 35c each; \$3.50 for 12. 4 to 5 ft., 50c each; \$5.00 for 12.**

CARAGANA (Siberian Pea Tree)—10 to 12 ft. The bright yellow, pea shaped blossoms of June are followed by miniature pea pods. Foliage attractive and deeply cut. Is hardy in the most trying locations. **2 to 3 ft., 35c each; \$3.50 for 12. 3 to 4 ft., 40c each; \$4.00 for 12. 4 to 5 ft., 50c each; \$5.00 for 12.**



DANNY SAYS:

Our stock stands the "Blindfold Test." It is safe to buy "unsight and unseen,"—and there's not a kick in a carload. Our shrubs are large, heavy, bushy plants,—specimen stock,—not to be compared with the cheap "mail order bargain" stock offered by so many firms.



Forsythia.

CORAL BERRY (Indian Currant) (*Symphoricarpos vulgaris*)—3 to 5 ft. A desirable shrub for shady places. The rose colored flowers of June and July are followed in the fall by red coral like berries which cling in great profusion along the branches. A very attractive berried shrub. **2 to 3 ft., 40c each; \$4.00 for 12.**

BETCHEL'S FLOWERING CRAB—10 to 15 ft. One of the most beautiful small trees or large shrubs grown. In the springtime it is entirely covered with double flowers of light rose color which hold on to the branches for a long time. **2 to 3 ft., 65c each; \$6.50 for 12.**

pleasing shrub similar in manner of growth to the Red Twig Dogwood but especially valuable for its bright yellow bark which makes a pleasant contrast with the Red Twig Dogwood or other shrubs in winter. **2 to 3 ft., 40c each; \$4.00 for 12.**

GOLDEN TWIG DOGWOOD—6 ft. A very

RED TWIG DOGWOOD—6 to 8 ft. Strong growing, attractive shrub especially noted for the bright red bark of its twigs and branches which are most striking during winter. They increase in brilliance of color in late winter and early spring. Pruning out the old wood to encourage new growth increases the brilliancy of color. **2 to 3 ft., 40c each; \$4.00 for 12; 3 to 4 ft., 50c each; \$5.00 for 12.**

BLACK BERRIED ELDER (*Sambucus canadensis*)—6 ft. This hardy, ever popular Elderberry is famed for its fragrant white flowers which are produced in flat clusters, often a foot across, in June and July. It is a favorite of bird lovers for the beautiful black berries furnish abundant food for our feathered friends and, as Hottes says in his book on shrubs, "It is only fair to say that Europeans use the flowers and fruits to make wine,—Americans merely admire the blossoms and fruits, according to law." **2 to 3 ft., 50c each; \$5.00 for 12.**

GOLDEN ELDER (*Sambucus aurea*)—7 ft. A rapidly growing shrub of great value where a yellow color note is desired. The light yellow leaves hold their attractive hue throughout the summer and toward autumn color to a bright golden. It is at all times a conspicuous and effective plant where brightness or contrast is desired in the landscape. **2 to 3 ft., 40c each; \$4.00 for 12.**

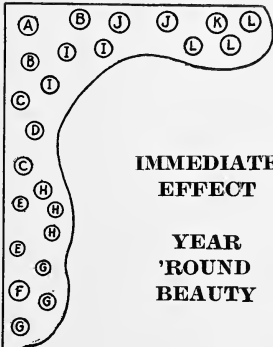


Snowberry.

FORSYTHIA (Golden Bell) (*F. fortunei*)—6 to 8 ft. Few spring flowering shrubs can equal Forsythia in splendor and brilliance. Early in the spring before any leaves appear the twigs and stems are smothered by a mass of golden-yellow blossoms. **2 to 3 ft., 75c each; \$7.50 for 12.**

A Charming Corner

For the Outdoor Living Room

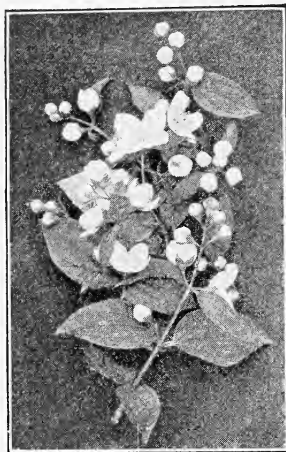


**IMMEDIATE
EFFECT**

**YEAR
'ROUND
BEAUTY**

- A—1 Newport Red Plum, 5-6 ft.
- B—2 Tartarian Honeysuckle, 2-3 ft.
- C—2 Red Twig Dogwood, 2-3 ft.
- D—1 Golden Twig Dogwood, 2-3 ft.
- E—2 Purple Lilac, 2-3 ft.
- F—1 Caragana, 3-4 ft.
- G—3 Spirea Froebeli, 1 1/2-2 ft.
- H—3 Snowberry, 2-3 ft.
- I —3 Sir Thomas Lipton Rose, 2 yr.
- J—2 Golden Elder, 2-3 ft.
- K—1 Ninebark Spirea, 2-3 ft.
- L—3 Hydrangea Pee Gee, 2-3 ft.

24 Quality plants. List price\$11.65
DANIELS SPECIAL PRICE, ONLY 8.85



Mock Orange.

snow white, and produced in abundance for a long period. Especially valuable because it comes when blooms are scarce, just after the abundant blossoms of spring. Worthy of a place in every planting. 2 to 3 ft., 60c each; \$6.00 for 12.

HYDRANGEA PEE GEE (*H. paniculata grandiflora*)—4 to 5 ft. Blossoms from August to frost and the dried flowers persist on into winter. The large conical flower-heads of white take on a pinkish hue in September. One of our most desirable shrubs. Both this and the Hills of Snow will bloom the first year. 2 to 3 ft., 60c each; \$6.00 for 12.

LILAC (*Syringa vulgaris*)—Purple or white. 10 to 15 ft. Everyone knows the Lilac and everyone loves it, for lilac time is a wonderful time of the year. Its graceful, cone-shaped flowers give forth a fragrance that brings back many spring-time memories. Valuable wherever a large "fool proof" shrub is wanted and unexcelled for a heavy screen or hedge. Universally successful. Purple, 2 to 3 ft., 40c each; \$4.00 for 12. White, 2 to 3 ft., 50c each; \$5.00 for 12.

PERSIAN LILAC (*S. persica*)—Purple. 7 ft. A smaller, more graceful form of lilac than the common varieties listed above. Leaves are smaller and borne on more slender branches. Its exceptionally fragrant, light purple flowers are borne profusely in May. Splendid for foundation plantings and among low shrubs and borders, where the common lilacs are too large. 2 to 3 ft., 50c each; \$5.00 for 12.

ROTHMAGENSIS LILAC or **ROUEN LILAC** (*S. rothmagensis*)—10 to 12 ft. One of the finest of the lilacs. The reddish purple flowers are somewhat smaller than those of the common lilac, are borne in greater profusion and make a splendid display. 2 to 3 ft., 75c each; \$7.50 for 12.

VILLOSA LILAC (*S. villosa*)—8 ft. Late flowering lilac. Blossoms somewhat later than the common lilac giving a much desired length to the lilac blooming period. A very large, rich, dark foliage furnishes a pleasing background for the pinkish blossoms in June. A highly desirable shrub, attractive both in and out of blossoming season. 2 to 3 ft., 75c each; \$7.50 for 12.



Hydrangea Pee Gee.

**DANNY SAYS:**

Here's a pair (and they need each other for pollination) Semi-dwarf cherry trees that are unbeatable for use in the ornamental border.—Nicollet and Zumbra. Neat in form, attractive in foliage (beautifully colored much of the season) and such heavy fruiters!

MATRIMONY VINE (*Lycium chinense*)—An extremely hardy, general utility plant which is used both as a low shrub and as a vine. Will flourish even under the most trying conditions. Splendid to use as a ground cover and soil retainer on steep slopes and embankments. Its handsome purple flowers are followed by brilliant red berries which persist through the winter. **Large 2 year No. 1, 40c each; \$4.00 for 12.**

MOCK ORANGE (*Philadelphus coronarius*)—Sweet scented. 7 ft. A hardy vigorous growing shrub which lends itself to many uses and is especially valuable because of the pure white, sweetly scented flowers which are borne profusely in June. **2 to 3 ft., 40c each; \$4.00 for 12.**

MOCK ORANGE (*P. grandifloris*)—Large flowering. 9 ft. A somewhat more vigorous growing shrub than the *Coronarius*. Fairly covered with large white flowers early in the summer. Unrivalled for screening or background in a heavy planting. **2 to 3 ft., 40c each; \$4.00 for 12.**

MOCK ORANGE LEMOINES (*P. lemoinei*)—5 ft. A splendid, medium height mock orange, with small, fragrant white flowers and small foliage. Excellent in foundation plantings. **2 to 3 ft., 60c each; \$6.00 for 12.**

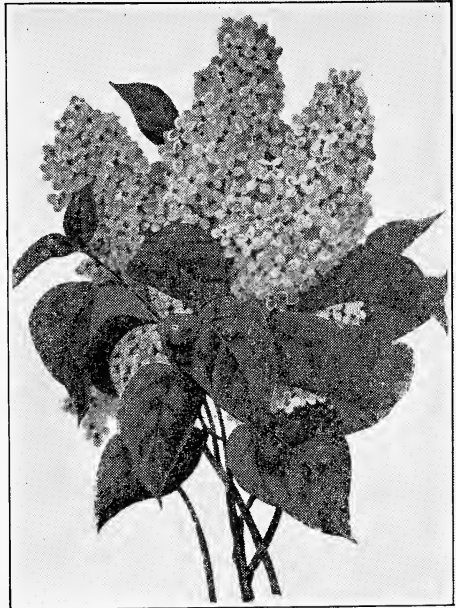
MOCK ORANGE VIRGINAL (*P. virginale*)—5 ft. Probably the most valuable of all the mock oranges. The flowers are larger and more fragrant than those of any other variety and its blooming season is one of the longest. **18 to 24 inch, 60c each; \$6.00 for 12.**

DOUBLE FLOWERING PLUM (*Prunus triloba*)—In early spring the twigs of this shrub are entirely enveloped with masses of double, light pink flowers while other shrubs are still leafless. A striking and valuable shrub. **2 to 3 ft., 65c; \$6.50 for 12.**

NEWPORT RED FOLIAGE PLUM—8 to 15 ft. While we also list Newport as a tree, and it is commonly grown that way, it may be readily trained to a small size and used as a shrub. It is of outstanding value because of its attractive ever changing, purplish red foliage. **2 to 3 ft., 50c each; \$5.00 for 12.**

SNOWBALL (*Viburnum opulus sterilis*)—8 ft. The old-fashioned snowball of grandmother's garden. Its pure white, double blossoms are especially welcome, coming as they do early in the season. **2 to 3 ft., 75c each; \$7.50 for 12.**

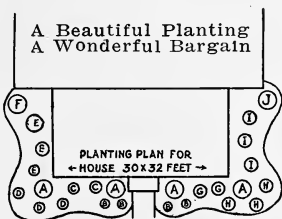
SNOWBERRY (*Symphoricarpos racemosus*)—4 to 5 ft. A very attractive medium growing shrub which does well in shady locations. The leaves are dark green and slender, giving the appearance of a very neat, delicately formed shrub. The pink blossoms of mid-summer are followed by clusters of large, attractive, milk white berries which hang on the plant through the winter. **2 to 3 ft., 40c each; \$4.00 for 12.**



Purple Lilac.

A Corking Foundation Planting

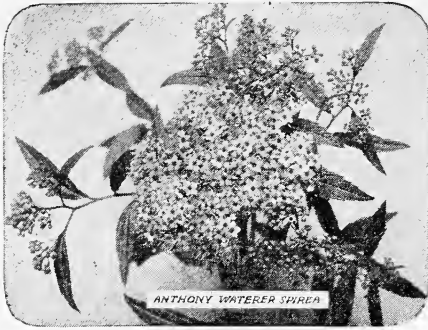
A Pleasing Introduction to Your Home.



- A—4 Bridal Wreath, 2-3 ft.
- B—4 Anthony Waterer Spirea 1-1½ ft.
- C—2 Snowberry, 2-3 ft.
- D—3 Hydrangea Hills of Snow 2-3 ft.
- E—3 Coral Berry 2-3 ft.
- F—1 Sweet Scented Mock Orange 2-3 ft.
- G—2 Hydrangea Pee Gee 2-3 ft.
- H—3 Japanese Barberry 1½ to 2 ft.
- I —3 Hansa Rose, 2 year.
- J—1 Persian Lilac, 2-3 ft.

26 Splendid shrubs. List price\$12.60

DANIELS SPECIAL PRICE, only 9.75



SPIREA COLOSA ALBA—2 to 3 ft. An interesting dwarf spirea of rather refined foliage with large flat clusters of white flowers. A good facer shrub. **12 to 18 inch, 50c each; \$5.00 for 12.**

SPIREA FROBELLI—2 to 3 ft. A dwarf shrub excellent for edging and for use in front of taller shrubs. Its bright crimson flowers add an attractive touch of color to the landscape throughout late summer and early fall. **18 to 24 inch, 40c each; \$4.00 for 12.**

SPIREA OPULIFOLIA (Ninebark)—8 ft. A tall vigorous spirea with heavy foliage and spreading growth habit. Bears many clusters of white flowers. Splendid for background or screen plantings as the foliage holds well to the plant in winter. **2 to 3 ft., 35c each; \$3.50 for 12. 3 to 4 ft., 45c each; \$4.50 for 12.**

SPIREA SORBIFOLIA (Plume or ash-leaf spirea)—5 ft. Foliage resembles that of the Mountain Ash. An abundance of white feathery flower spikes, 6 to 8 inches long makes it a most attractive shrub in mid-summer. **2 to 3 ft., 50c each; \$5.00 for 12.**

SPIREA VAN HOUTTEI (Bridal Wreath)—5 to 7 ft. Blooms in May. The Northwest's most used, most adaptable and probably most valuable shrub. Will grow in almost any location. In late May it is covered with masses of beautiful white flowers, gracefully arching the branches to the ground. During the rest of the season its trim, neat appearance makes it a valuable foliage plant. The most admired of all shrubs. **2 to 3 ft., 35c each; \$3.50 for 12. 3 to 4 ft., 45c each; \$4.50 for 12.**



FRAGRANT SUMAC (Rhus canadensis)—3 to 4 ft. A compact growing shrub with fragrant leaves which become brilliant scarlet and crimson in the fall. Will do well in the hottest and driest locations. **2 to 3 ft., 50c each; \$5.00 for 12.**

TAMARIX—6 to 8 ft. One of the most graceful of all shrubs. Its fine, feathery, bluish-gray foliage, gracefully arching, gives the impression of a large, billowy plume. Desirable for use in flower bouquets. Delicate carmine-pink flowers are borne in long terminal clusters. **2 to 3 ft., 40c each; \$4.00 for 12. 3 to 4 ft., 50c each; \$5.00 for 12.**

WEIGELA ROSEA—5 ft. The most widely used of the Weigelas and always a favorite because of its delicate pink, bell-shaped blossoms that are borne in great profusion along the arching stems. Splendid foliage. **2 to 3 ft., 50c each; \$5.00 for 12.**



DANNY SAYS:

When you wish to draw an artistic line, (i. e. a property line), draw it with a hedge. Hedges make a fence with no offence to anyone, not even the neighbors. Evergreen Hedges will work for you twelve months of the year. The best are Arbor Vitae and Norway Spruce. See prices on pages 20 and 21.

DANIELS HEDGING SHRUBS



Buckthorn Hedge.

THUNBERG'S BARBERRY—Best dwarf hedge. Attractive and effective.

BUCKTHORN—Best sheared low hedge, or free growing tall hedge. May be trained from 18 inches to 18 feet. The Buckthorn we offer are large 4-year-old, twice cut back plants and will give immediate effect, making strong hedges the first year.

ALPINE CURRANT—One of the finest low, compact hedges. Stands shearing well. SEE QUARANTINE REGULATIONS ON PAGE 38.

RED TWIG DOGWOOD—Free growing fine for an informal hedge, or stands shearing nicely if a formal hedge is wanted. The bright red bark makes it especially desirable during winter and early spring.

HEDGEWOOD—A hardy new plant which has become very popular for both trimmed and untrimmed hedges. Its fine leaves and delicate red twigs give it an appearance of softness and gracefulness that is most pleasing.

Living, Lasting Fences

The proper use of hedges adds immeasurably to the attractiveness of one's home grounds. They will effectively mark a boundary line, serve as a screen or furnish a pleasing background for an informal planting. In this group we offer fine strong plants, suitable for starting live fences. These are well grown, strong rooted hedging size specimens which will give quick results. The prices are as follows (excepting Roses): \$3.50 for 12; \$6.00 for 25; \$20.00 for 100.

TARTARIAN HONEYSUCKLE—Unexcelled where a neat, compact hedge of 8 or 9 ft. in height is desired.

PURPLE LILAC—Perhaps the best hedge for moderately tall screening purposes. A mass of fragrant bloom in the Spring.

MATRIMONY VINE—One of the finest hedges to plant along the top of a wall or steep bank as the slender vine-like twigs arch down and hang gracefully over the wall.

ROSES. *Hansa* *Rugosa* *Rose*—Probably the best of the hardy roses for hedging. A healthy vigorous grower, profusely covered with beautiful fragrant red roses all summer and fall. \$7.50 for 12; \$14.00 for 25.

SPIREA VAN HOUTTEI—Best medium height, informal hedge. Succeeds and pleases everywhere.

HARDY VINES

Pleasing Climbers That Screen, Cover and Beautify

BITTERSWEET—A hardy climbing vine with glossy, green foliage. The twisting grayish stems add a touch of individuality, but the most cherished feature of the vine is its long clusters of artistically arranged orange-red berries. One of the most popular of Winter bouquet materials. Always plant three or more vines to be sure of abundant production of berries. Strong 2-year No. 1 plants: 60c each; 3 for \$1.50.

VIRGINIA CREEPER (American Woodbine)—Considered the most popular and most useful of all vines adapted to general growing in the northern climates. It is a quick, strong grower with healthy foliage. In the fall it becomes especially attractive as the foliage turns to bright red. Strong 2-year No. 1 plants 25c each; \$2.50 for 12.

VIRGINIA CREEPER ENGELMANII—There is no better hardy vine than this for covering brick, concrete or stucco surfaces. It climbs rapidly clinging to rough surfaces without support. It is similar in other respects to the common Virginia creeper but somewhat neater in appearance with a slightly smaller leaf. It has the same brilliant autumn coloring. Strong 2-year No. 1 plants: 35c each; \$3.50 for 12.

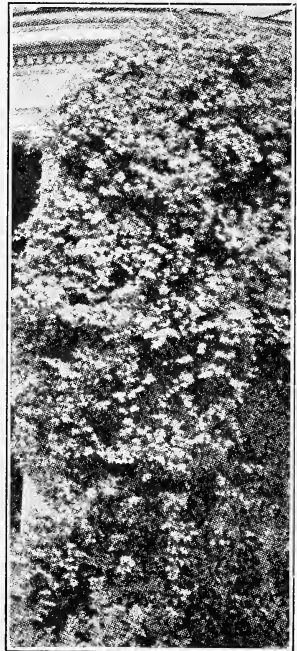
BETA GRAPE—One of the most hardy of the cultivated grapes. A more rapid grower than the wild grape, to which it is superior in every respect as a cultivated vine. Strong 2-year No. 1 plants: 25c each; \$2.50 for 12.

SCARLET TRUMPET HONEYSUCKLE—This splendid vine with its interesting twining method of growth is generally considered the finest of the honeysuckle vines. Brilliant, yellow throated, scarlet flowers make the vine one of unusual beauty all through its long blooming period. Strong 2-year No. 1 plants: 50c each; \$5.00 for 12.

CLEMATIS JACKMANI—The most popular of the large flowered clematis hybrids. A strong grower with beautiful blossoms of velvety, violet-purple hue. Very strong 2-year plants: \$1.00 each; 3 for \$2.75.

CLEMATIS PANICULATA. (Sweet Japan Clematis)—The most vigorous growing Clematis with an attractive, shiny green foliage. A very free bloomer. So covered with small white "star" flowers that it has the appearance of being a mass of lacy-like blossoms. Very strong 2-year plants: 50c each; 3 for \$1.25.

SEE CLIMBING ROSES ON NEXT PAGE.



Clematis Paniculata.

Daniels Beautiful Roses



Excelsa.

The Queen of all Flowers

The rose is unquestionably the most popular of all flowering plants. Their fragrant blooms with varying form and color are unsurpassed by any other plants.

Our roses are grown especially to meet the rugged climatic conditions of the Northwest. They are hardy, field grown, of the largest two-year-old grade, full of vigor and life, ready to bloom for you just a few weeks after planting.

Roses should be pruned back heavily when planted. The success of their growth the first year depends largely on the pruning given them at this time. We will be glad to prune your roses before shipping if you will so specify in your order.

Climbing Roses

EXCELSA (Red Dorothy Perkins.)—Probably surpasses all other climbing roses in hardiness and the equal of any of them in general desirability. The clean, healthy leaves are bright glossy green, making it exceptionally valuable when not in bloom. Flowers are large for a climbing rose, very double and are borne in clusters. The bright crimson petals are tipped with scarlet. Large sized plants, ready to bloom. 50c each; \$5.00 for 12.

GARDENIA—Of all the climbing roses there is no yellow one so satisfactory as Gardenia. Not only is it the hardiest of the yellow roses, but it is also a strong grower and a free producer of beautiful yellow blooms. 75c each; \$7.50 for 12.

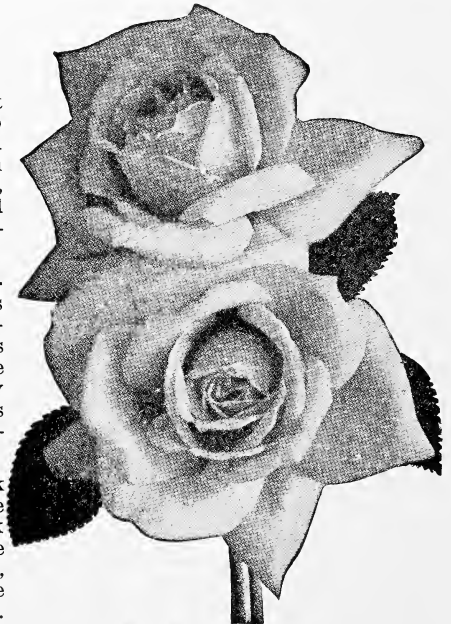
DR. W. VAN FLEET—A climbing rose of unsurpassed merit, combining vigorous growth, unusual beauty and intense fragrance. The enormous flowers of light pink, shading deeper at the center are borne singly on stems of unusual length so that it is a splendid rose for cutting purposes. Considered by many to be the best of all climbing roses. 75c each; \$7.50 for 12.

Bush Roses

CRIMSON BABY RAMBLER—The most popular Baby Rambler rose, reaching 1½ to 2 ft. in height. It blooms abundantly and continuously from the first of the rose season on until frost. The clusters of brilliant, crimson-red flowers add a touch of color and beauty without which every garden is incomplete. 75c each; \$7.50 for 12.

FRAU KARL DRUSCHKI (Hybrid Perpetual) Often called Snow Queen. White. This most beautiful of the white roses is commonly called the white American Beauty. Its unusually attractive long pointed buds are followed with large pure white, perfectly formed double blooms, frequently 6 inches in diameter. Blooms in June and all summer. 75c each; \$7.50 for 12.

PAUL NEYRON (Hybrid Perpetual) Pink—One of the finest roses for outdoor culture and one of the largest. The clear pink blooms which shade to a beautiful rose are borne from June until frost on long, smooth, thornless stems. Delightful fragrance. Fine fall bloomer. One of the most popular roses. 75c each; \$7.50 for 12.



Dr. W. Van Fleet.



Gruss an Teplitz.

PRINCESS ADELAIDE (Moss Rose)—The favorite old fashioned moss rose. The buds are beautifully mossed and the flowers, when open, are set in a background of moss. A charming, deep pink rose. Bush absolutely hardy. Something to be desired in the rose garden or as a single plant. The old fashioned flowers are surely coming back! 75c each; \$7.50 for 12.

GRUSS an TEPLITZ (Hybrid Tea)—Crimson. Probably the best of all crimson roses for garden decoration. It blooms freely from June until frost, topping the shapely, vigorous plant with large, fragrant, crimson-scarlet flowers of intense depth and richness of color. Needs careful winter covering. One of the showiest of garden roses. 75c each; \$7.50 for 12.

PERSIAN YELLOW. Yellow—A splendid old favorite and one of the finest shrubby types for the yard. Early in the season the entire bush is covered with a mass of beautiful, fragrant roses of deep golden yellow hue. One of the hardiest of the roses and suitable to all locations. 90c each; \$9.00 for 12.

DANIELS ESQUIMO ROSES

The Hardest Everbloomers

The Rugosa Rose Hybrids, or Esquimo roses, as they are often called because of their extreme hardiness, are the best roses for general growing throughout the North-west as they are not only perpetual bloomers, most attractive in appearance of bloom, foliage and hips, and highly fragrant, but are thoroughly hardy without winter protection in Minnesota and the Dakotas. The beautiful double blossoms are vastly superior to those of the old single rugosa roses. They usually require no spraying and are the most easily grown of all the roses. Should be used freely in borders as are the hardy shrubs. We offer the four outstanding varieties. Large 2-year No. 1 plants: 75c each; \$7.50 for 12. One each of the four varieties only \$2.75.

HANSA. Deep Red—One of the hardiest, most dependable and most all round satisfactory of the red roses. The large, double red flowers have an attractive violet tinge, and are produced in great abundance from early summer until late fall. The plants are vigorous growers with shiny green foliage and hardy enough to stand the most severe climate without protection. If you love red roses in profusion all season in the shrub border, the rose garden or as a hedge then plant Hansa. It never disappoints!

CONRAD F. MEYER. Silver Pink—One of the finest pink roses of the real hardy sorts. It is an unusually strong grower with foliage, color and stem that are most attractive throughout the entire growing season. The large double showy pink flowers have the penetrating fragrance of the old fashioned June roses and are borne on long, sturdy stems.

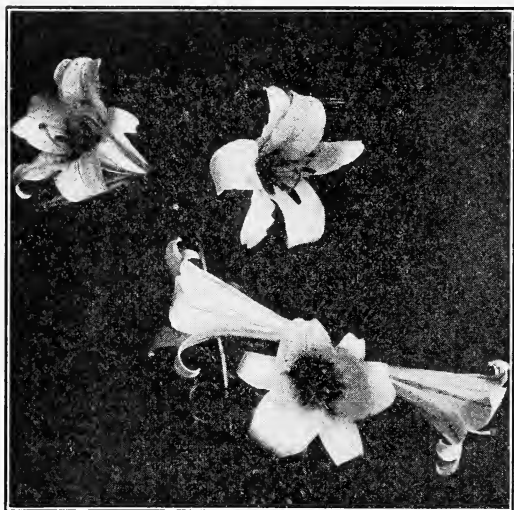
SIR THOMAS LIPTON. Snowy White—The large, double, pure white blooms of this splendid variety are borne continuously in clusters on strong stems. The foliage is a very attractive dark leathery green. An outstanding favorite.

F. J. GROOTENDORST. Bright Crimson—A new variety of unusual merit commonly called "The baby rambler rugosa rose." This delightful cross between the red rugosa and the crimson baby rambler has perpetuated the best qualities of both parents. It has the typical rugosa foliage, health and manner of growth,—with the size, type and profuseness of bloom, of the baby rambler. Because of its iron-clad hardiness it may be used in shrub borders. With its continuous production of clusters of bright crimson bloom, it stands out strikingly from early summer until frost.



Hansa.

DANIELS HARDY LILIES



Regal Lily.

REGAL—The Regal Lily, considered the most beautiful and the most desirable of all the hardy lilies, was introduced into this country from the mountain fastness of China where climatic conditions are much more severe than ours. The large, exquisitely perfumed flowers are white, shaded pink on the outside with beautiful yellow centers. They are similar in size and charm to the hothouse Easter lilies. The sturdy stems which bear the flowers are from 4 to 5 feet high and lined with graceful, slender leaves. A single plant often yields as many as 20 or more flowers during the season. At our moderate prices it is possible for every garden to have a generous planting of Regal Lily. **50c each; 3 for \$1.25.**

ELEGANS—This beautiful lily is of a rich orange-brown hue that sometimes approaches crimson. Flowers are large and striking in appearance and borne over a long season. Does well even under the most adverse conditions. **50c each; 3 for \$1.25.**

TIGRINUM (Double Tiger Lily)—These bright orange and black double blossoms are vastly superior to those of the fine old Tiger Lily that has been loved for so many years. The charm and beauty of the older variety is greatly augmented in this improved new kind, and its handsome flowers far more lasting. **30c each; 3 for 75c.**

HEMOROCALLIS FULVA—This deservedly popular Yellow Day Lily is a most useful and attractive plant in the border. Its pleasing yellow, trumpet shaped flowers, produced in profusion during long periods, are borne on strong, slender stems, which surmount its tall, graceful grass-like foliage. Extremely hardy and free growing. **30c each; 3 for 75c.**

DAHLIA

Unrivalled for showy flower effects in late summer and fall. Easy to grow. Roots should be stored in the cellar over winter. We offer a fine mixture of colors with large showy blooms. **20c each; 3 for 50c.**

GLADIOLI

This splendid group of summer flowering bulbs is too well known and its value too well appreciated to need any lengthy description here. If successive plantings are made in the spring after the danger of hard freezing is over, blooms may be had over a long period during summer and fall. The assortment of bulbs we offer are No. 1 in size and a mixture of fine, standard varieties. They will give highly satisfactory results, both as cut flowers and in garden display. **50c for 12; \$4.00 for 100.**

These real aristocrats of the garden have been all too frequently omitted from our home plantings. With their stately manner of growth and large blooms of striking beauty, they add a note of interest to the border planting that can be secured from no other plant material. They are at their best when used with other perennials or low shrubs where they blend attractively into the entire border effect. The varieties we offer are hardy throughout the entire Northwest. Our bulbs are of good size and will give strong, satisfactory growth and quick bloom.

May 4, 1928.
Received an order of plum trees last week and surely was pleased with them.
Aug. Hartung,
Arkansaw, Wis.



Gladioli.

DANIELS HARDY PERENNIALS

The "finishing touches" to the landscape planting whether in an informal border or a formally laid out garden, are best added through the use of perennials. With their unlimited assortment of bloom, size and color they may be worked into all parts of the border, where their brilliant hues add to the planting a pleasing zest without which it would be incomplete. Their endless range of colors and continuous season of bloom furnish the gardener with an abundant supply of cut flowers from spring until late in the fall. The assortment we offer comprises the most desirable of the hardy perennials for the northern climate. Our plants are strong, field grown stock, vastly superior to the one year seedling plants commonly found on the market.

Plant Daniels hardy perennials and you will be assured of satisfactory results.

For proper effect at least three plants of one kind should be planted together. For this reason we offer our perennials in lots of that number. **Single plants will be furnished at one-half the price of three.**

ANCHUSA Italica, Dropmore (Alkanet)—This beautiful flower can not be surpassed for producing a mass effect of brilliant blue all through June and July and longer if the old blossom spikes are removed. Anchusa produces long spikes of turquoise blue flowers. The leaves are large, grayish-green, heavily pubescent, and in themselves add an attractive color note to the garden. 4 to 5 ft. **3 for 60c; 12 for \$2.00.**

AQUILEGIA (Columbine) long spur hybrids—The daintiest of all our outdoor grown flowers for bouquet purposes, and one of the most attractive and longest blooming in the garden. Our long-spurred hybrids are a very choice assortment, including Mrs. Scott Elliott hybrids and many of the finer named varieties. Their blooming period covers late spring and early summer. **3 for 70c; 12 for \$2.30.**



Aquilegia.

BLEEDING HEART (Dicentra spectabilis)—An unusually graceful grower. Its delicately formed foliage and its beautiful rose-crimson, heart shaped flowers, borne on long drooping spikes, have made this charming plant one of the most cherished of all garden perennials. Flowers in April and May. 18 inches. **3 for \$1.60; 12 for \$6.00.**

BOLTONIA Latisquama (False Chamomile)—A very hardy, showy plant which is literally covered in late summer and autumn with thousands of aster-like blossoms of pinkish or slightly lavender hue. 4 to 6 ft. **3 for 60c; 12 for \$2.00.**

BUTTERCUP (Ranunculus)—A most attractive, bright yellow bloom closely resembling Pompom Chrysanthemums. Starts blooming early in the spring and continues for a long period. Blooms in great profusion. An old fashioned flower and one which deserves a place in every garden. **3 for 60c; 12 for \$2.00.**



Gaillardia.



Fall Daisy.

onion like leaves at all times furnish an interesting variation in plant form but are most attractive when topped with their pleasing little lavender flowers. If planted in the border close to the house they are always quickly available for garnishing and flavoring purposes. **3 for 40c; 12 for \$1.30.**

COREOPSIS (Tickseed)—An improved Coreopsis with unusually large, bright yellow flowers. One of the best of all hardy plants. From June until frost the brilliant yellow blooms add a sprightly touch of color in the perennial border, or with their long stems may be used effectively for cut flower effects. **3 for 60c; 12 for \$2.00.**

FALL DAISY (Pyrethrum uliginosum)—This giant daisy is one of the hardiest of all perennials and does well even under the most adverse conditions of soil, moisture and exposure. Its tall 4 to 6 ft. stems are literally covered with large 2 to 3 inch white flowers with brilliant yellow centers from July until frost. **3 for 60c; 12 for \$2.00.**

PERSIAN OR PAINTED DAISY (Pyrethrum hybridum)—Another extremely hardy, free blooming perennial. Throughout May and June they furnish a continual supply of daisy shaped flowers ranging from white to shades of pink, rose and red. Their varying colors and profuseness of bloom make them attractive at all times in the border. Because of their long stems they are unsurpassed during their season as a cut flower. 2½ ft. **3 for 60c; 12 for \$2.00.**

DELPHINIUM (Larkspur)—One of the most beautiful and most varied of all garden perennials. Extremely hardy. Increases in size and beauty each year. We offer Blackmore and Langdon's and other leading strains of the finest hybrids. **3 for 70c; 12 for \$2.30.**

GAILLARDIA (Blanket Flower)—For length of blooming season, bright colors and abundance of bloom, it is difficult to find anything superior to Gaillardia. The brilliant, highly colored flowers of varying shades are striking when planted in a bed by themselves. Are equally valuable when blended with other plants in the border. 2 ft. June to heavy frost. **3 for 60c; 12 for \$2.00.**

GOLDEN GLOW (Rudbeckia laciniata)—The tall, dark green stems and foliage of golden glow crowned with masses of large, double, yellow blossoms during August and September, makes this an invaluable addition to the garden in places where a strong growing perennial of from 5 to 6 ft. is wanted. One of the hardiest of all perennials. **3 for 60c; 12 for \$2.00.**

HOLLYHOCKS (Althea rosea)—An old fashioned garden favorite whose popularity is ever increasing. The tall, spire-like spikes are covered with a mass of exquisitely double, beautifully colored, flowers ranging in colors from whites through yellows and pinks into varying shades of red. These stately picturesque plants bring to the garden an upright or vertical growth effect that can not be secured from any other plant. **3 for 60c; 12 for \$2.00.**



Delphinium.

Bulbs Best She Ever Bought

I have been going to write you about the bulbs I got from you this spring and I want to say right here that they were the best I have ever bought. My lilies will soon be in bloom and everything is growing fine. The buttercups have been in bloom all spring and are still in bloom.

June 27, 1928.
Mrs. Geo. Kuhn, Algona, Iowa.

POSTAGE
WILL BE PAID
BY
DANIELS NURSERY

NO
POSTAGE STAMP
NECESSARY
If Mailed in the
United States

BUSINESS REPLY ENVELOPE

First Class Permit No. 1, Sec. 384½, P. L. & R., LONG LAKE, MINN.

The Daniels Nursery

Long Lake,

Personal Attention of
Franc P. Daniels

Minn.





IRIS—Iris still leads in popularity among the early spring bloomers. Their culture is simple. They last indefinitely and afford the planter a wide variety of sizes and colors. We offer some of the most dependable varieties. 25c each; 12 for \$2.00.

One each of the five varieties for \$1.00.

Madam Chereau—White, frilled with blue-violet at edge.

Juanita—Deep clear, blue violet.

Queen of May—Soft rose-lilac. Nearest pink in Iris.

San Souci—A splendid bright gold with brown markings.

Flavescens—Delicate shade of yellow or cream.

Unnamed varieties. 20c each; 12 for \$1.75.

HARDY MARGUERITE (*Anthemis tinctoria kelwayi*)—All summer long and into the fall these attractive little plants furnish a profusion of interesting, daisy-like flowers of golden yellow. The desirability of the plant is augmented by its somewhat fragrant, handsomely cut foliage. Excellent for cut flowers. Succeeds in the poorest soils. 1½ ft., 3 for 60c; 12 for \$2.00.

PENTSTEMON (*Barbatus torreyi*) **Beard Tongue**—A very much worth while border and rocky plant with unusually graceful manner of growth and delicate charm. The tall spikes of brilliant scarlet flowers, somewhat resembling fox-glove, are very showy. 3 for 60c; 12 for \$2.00.

PEONY—We have a splendid assortment of this deservedly popular perennial in leading named varieties and in unnamed ones in pink, white and red. Our peonies are strong 3 to 5-eye divisions.

Festiva Maxima—Grandest of all white peonies. 60c each; 3 for \$1.50.

Rose Fragrans—Dark rose pink, very fragrant. 60c each; 3 for \$1.50.

Rubra Superba—Deep crimson. Best of the late red. 75c each; 3 for \$2.00.

Splendid unnamed varieties, pink, red or white. 50c each; 12 for \$2.00.

PHYSOSTEGIA (*Virginica* and *v. alba*) **False Dragonhead**—An interesting little perennial, thoroughly hardy, which sends up strong spikes 2 to 3 ft. high of delicate, tubular flowers of pink and white. A valuable addition to any perennial border. July and August. 3 for 60c; 12 for \$2.00.

CLOVE PINK (*Dianthus plumarius*)—This hardy little pink is a great favorite for border plantings and rock gardens. Handsome grass like, sea-green foliage, topped with fragrant pink, purplish and white flowers on long spikes. These delightful flowers resemble miniature carnations and are produced through the summer and fall in great abundance. 3 for 60c; 12 for \$2.00.

SHAMROCK—This thoroughly hardy and thoroughly famous perennial is most attractive and should find a place in every garden. It has an especial appeal to the "Sons of Erin." 3 for 60c; 12 for \$2.00.



Peony.



Sweet William.

SWEET WILLIAM (*Dianthus barbatus*)—Ever popular in the perennial garden whether it be old fashioned or modernistic in materials. Throughout May and June it is a profuse yielder of flowers in variations of red, rose and white colors. 18 in., 3 for 60c; 12 for \$2.00.

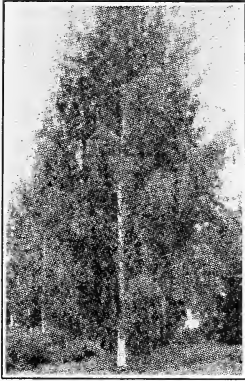
VIOLA—Hardy Pansy. A dainty dwarf edging plant which combines the

good features of both vio-

let and pansy. From May until September its rich green foliage is profusely decked with delicate blue flowers resembling small pansies. 8 inches. A splendid border plant. 3 for 60c; 12 for \$2.00.

DANIELS LAWN TREES

No outdoor living room is complete without the cool shade of properly placed trees. Then too, they furnish a suitable framing for both close and distant views in the landscape and when used for screening effects add a comfortable feeling of privacy. Our hardy Northern grown trees have well developed root systems which insure you quick and certain growth.



Cut Leaf Birch.

MOUNTAIN ASH—One of the most popular of the small lawn trees. Its white flowers of early spring are followed by clusters of bright red berries which remain throughout the winter. The graceful spreading branches and finely cut foliage present an attractive appearance at all times. 5 to 6 ft., \$1.00 each; 12 for \$10.00.

CUT LEAF WEEPING BIRCH—One of the most graceful and most admired of all lawn trees. Its tall, slender, graceful drooping habit, its silvery white bark and delicately cut foliage are equalled in beauty by few, if any, trees. One of the most popular lawn trees whether used as a single specimen or in groups of threes and fours. 5 to 6 ft., \$2.50 each; 6 to 8 ft., \$3.50 each.

WHITE BIRCH—A beautiful, graceful, upright growing tree famed for its attractive white bark. A favorite for lawn tree planting. Effective when planted singly or in groups. If planted three or four in one hole you will get the natural effect of native growing trees. 5 to 6 ft., \$1.25 each; 3 for \$3.25.

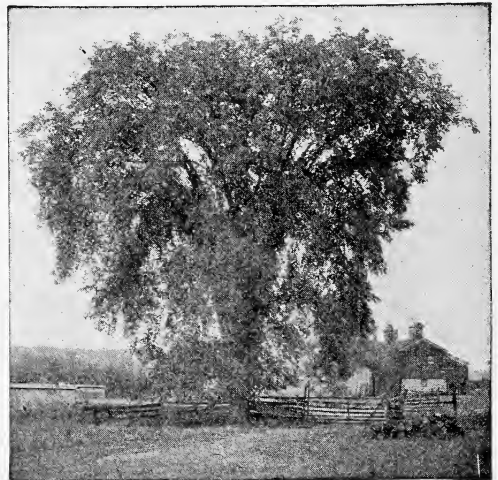
BUTTERNUT—A rapidly growing attractive native tree which produces nuts early and in great profusion. The thick meated nuts are of high quality and may be stored for winter and spring use. May be used as a lawn tree and is admirably adapted to planting in groves or wood lots. Write for prices in large quantities. 4 to 5 ft., 60c each; 12 for \$6.00. 5 to 6 ft., 75c each; 12 for \$7.50; 6 to 8 ft., \$1.00 each; 12 for \$10.00.

DOLGO CRAB APPLE—The most attractive of all apple trees and the best suited to use as a lawn tree. Not only a desirable ornamental tree at all times, but a splendid fruit producer. See complete description on page 28. Two-year trees, \$1.25; 12 for \$12.50.

AMERICAN ELM—America's most popular tree for shade, street and lawn plantings. A magnificent tree reaching from 60 to 80 ft. in height. Combines long life and rapid growth. 5 to 6 ft. trees, 75c each; 12 for \$7.50.

SOFT OR SILVER MAPLE—A hardy, quick growing shade tree which is of special value where immediate shade or screening effect is wanted. The tree is a vigorous healthy one with attractive green foliage and very free from all sorts of pests. For quick results use silver maple. 5 to 6 ft. trees, 75c each; 12 for \$7.50.

WEIR'S CUT LEAF MAPLE—A silver maple with a remarkable and beautiful deeply cut foliage. A rapid grower whose slender twigs and branches droop gracefully, giving the tree a most attractive appearance. Fine strong 5 to 6 ft. trees, \$1.25 each.

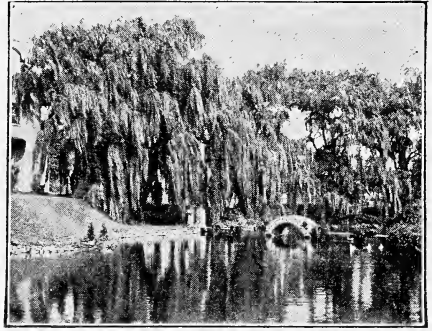


American Elm.

Best He Ever Planted

I am interested in Daniels stock because it is the best I ever bought or planted.
Feb. 20, 1928.
T. M. Hamp, Mapleton, Minn.

NEWPORT RED FOLIAGE PLUM—A beautifully colored plum tree. Valuable for landscape work because of its highly colored purplish-red foliage. The color persists throughout the entire year and is especially emphasized as the brightly colored new tips, which push out during the season, are contrasted against the duller hue of the more mature foliage. Newport is an upright growing tree which attains a height of from 12 to 15 feet. It is a strikingly beautiful ornamental tree at all times, but especially so in bloom. The fruit is small, rich magenta red in color, but of little or no value beyond its ornamental effect. Easily the best red foliage tree for the Northwest. 4 to 5 ft., 75c each; \$7.50 for 12. 5 to 6 ft., \$1.00 each; \$10.00 for 12.



Niobe Weeping Willow.

BOLLEANA POPLAR—Probably the most desirable of all of the slender, upright growing trees. Its spire-like, columnar form and glossy green leaves with downy white undersides have made it exceedingly popular where a strong vertical accent is desired in the landscape. 6 to 8 ft., \$1.50 each; \$4.00 for 3; \$15.00 for 12.

LOMBARDY POPLAR—A hardy, quick growing ornamental tree of especial value where a slender, upright form is desired. 5 to 6 ft., 75c each; \$2.00 for 3; \$7.50 for 12.

NORWAY POPLAR—A very hardy, quick growing tree. One of the best for quick screen plantings and wind break purposes. Its splendid, clean cut branching system and bright green foliage are attractive under all conditions. 6 to 8 ft., 75c each; \$7.50 for 12.

BLACK WALNUT—A hardy, strong growing nut tree that is rapidly increasing in popularity for ornamental purposes, for, in addition to being a splendid shade tree it is a heavy producer of deliciously flavored, meaty nuts. The high value of the wood for manufacturing purposes has rapidly depleted the native stock of these trees and has made the increased planting of them especially desirable. 5 to 6 ft., 75c each; \$7.50 for 12. 6 to 8 ft., \$1.00 each; \$10.00 for 12.

NIOBE WEEPING WILLOW—The best of the weeping willows. While it is a rapid grower it is perfectly hardy. A clean type of tree, free from the litter of broken branches and other trash so common in some willows. Its form is that of a graceful weeping tree and this, with its beautiful golden bark, makes it exceedingly attractive both in summer and winter. 5 to 6 ft., 75c each; \$7.50 for 12. 6 to 8 ft., \$1.25 each; \$12.50 for 12.00.

Windbreak Trees

Stock suited to windbreak, wood lot and extensive screening purposes.

Strong 3 to 4 ft. trees, 25 for \$2.00; 100 for \$7.00.

NORWAY POPLAR—A rapid growing clean cut windbreak or shelterbelt tree.

GOLDEN WILLOW—A large, quick growing willow with rich, yellow bark turning to a brilliant golden hue in early spring.

LAUREL LEAF WILLOW—A quick growing willow with a beautiful deep green, glossy leaf. A more refined tree than Golden Willow and not quite as large.



DANNY SAYS:

Nothing makes the outdoor living room more enjoyable than shade. How the youngsters enjoy its coolness on a hot day,—and for the grown ups it makes a pleasant refuge from the summer's heat.

DANIELS BEAUTIFUL EVERGREENS



Colorado Blue Spruce.

Nowadays every complete planting contains some evergreens. During the winter they form a most attractive part of one's planting, and during the summer their splendid colors and varying forms add a note of interest to even the most elaborate landscape effect. As specimen trees in front of the home they are perhaps second to none in popularity. Their importance in foundation plantings has increased so rapidly in the last few years that now a foundation planting seems incomplete without them. In the modern homes in which a foundation of Ruble stone is used its beauty is enhanced to a great degree by low plantings of dwarf evergreens. Probably no plantings can add more charm or individuality to the home grounds than a few glorious evergreens. What better hiding nook is there for the kiddies in their play, what more pleasing aroma is there than the delicate scent of the conifer or what more restful lullaby can one hear than the wind singing through the tall pines? No other plants can so effectively and completely provide a windbreak or screen for they are there to serve you throughout the winter and summer.

Whether in the foundation planting, border planting, screen or windbreak, evergreens give what no other trees can—twelve months of complete service and beauty.

We take the greatest pains in growing our evergreens so that they will give you 100% satisfaction. The trees offered below have been transplanted two or three times, depending on the size, and the roots pruned in such a manner that a heavy growth of fibrous roots has been developed. When these trees are dug for you, you will get plenty of roots. The prices of the trees given below include the cost of ball and burlap (B. & B.) If they are to be shipped please add 15c per tree or \$1.00 per dozen to your remittance to cover the extra cost of packing necessary.

AMERICAN ARBOR VITAE—This, the most popular of the Arbor Vitae, is a hardy and quick growing tree in almost every situation. It can be cut to any height or form desired and for this reason leads all evergreens for hedging purposes in the north. It is splendid for use in foundation plantings where a tree of from 15 to 20 feet in height is desired. All B. & B.

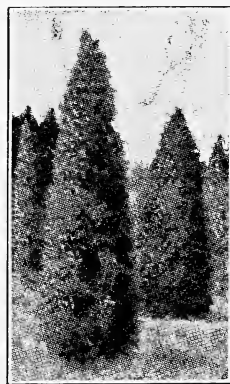
12 to 18 inches	\$1.00	2 to 3 ft.	2.50
18 to 24 inches	1.75	3 to 4 ft.	3.50

Special hedging size, twice transplanted stock. Not B. & B.

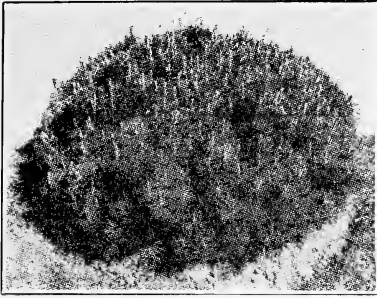
12 to 18 inch, 75c each; \$7.50 for 12; \$60.00 for 100.

GLOBE ARBOR VITAE—A dwarf, bushy evergreen that grows naturally in a rounded, ball like form and keeps its globe like shape without extra attention. Splendid for foundation plantings, tubs and low borders. One of the best all round satisfactory semi-formal dwarfs. 12 to 18 inch spread, \$4.00 each.

PYRAMIDAL ARBOR VITAE—The most compact and erect of the entire species, forming a solid pyramid of green that retains its slender shape without shearing. Seldom, even in mature trees, does it measure more than two feet in diameter at the base. Probably the most popular upright evergreen. 18 ft. high. 2 to 2½ ft., \$5.00 each; 2½ to 3 ft., \$6.50 each.



Pyramidal Arbor Vitae.



Mugho Pine.

SAVIN'S JUNIPER—One of the best dwarf evergreens. Thickly branched low trees of spreading, fanshape habit with a pleasing dark green color. May be trimmed. Unexcelled for use as a low bush in foundation and low border plantings. Endures city dust and soot exceptionally well. **18 to 24 inch, \$4.00 each.**

DWARF MUGHO PINE—An excellent dwarf pine, shaped like a globe with compact, erect branching habit. Always attractive but especially so in the spring when the upright new growth gives the appearance of miniature candles covering the entire bush. Deep green foliage. Exceedingly hardy. Generally considered to be the best all round dwarf evergreen. There is

a place for it in every foundation and low evergreen planting. **2 to 3 ft. 12 to 18 inch, \$5.00 each; 18 to 24 inch, \$6.50 each.**

BLACK HILLS SPRUCE—A valuable ornamental tree of compact dense growth. Foliage varies from dark green to blue-green in color. It will do well under dry soil and severe climatic conditions. A highly desirable tree for lawn planting but not as rapid a grower as the Norway Spruce. **12 to 18 inch, \$2.00 each.**

COLORADO BLUE SPRUCE—The most popular of all the evergreens for ornamental plantings. Its brilliant blue-green color, neat compact form and symmetrical habit of growth makes it invaluable in landscape work. We offer this year only small trees. **12 to 18 inch, \$5.00 each; \$50.00 for 12.**

NORWAY SPRUCE—One of the hardiest, most adaptable and most generally useful of all evergreens. Fits into any planting and, at our low prices, fits any pocket book. You can afford to use them freely. For quick growth there is probably no evergreen their equal. When well established in a permanent planting and given good cultural conditions it frequently grows from one to two feet each season. At our new low prices Norway Spruce may be used generously in your plantings as specimen trees, in corner groups, to frame views or for windbreak purposes. **12 to 18 inch, \$1.00 each; 18 to 24 inch, \$1.50 each; 2 to 3 feet, \$2.25 each; 3 to 4 feet, \$3.25 each.** Special hedging size, twice transplanted stock. Not B. & B. **12 to 18 inch, 75c each; \$7.50 for 12; \$60.00 for 100.**



Norway Spruce.



DANNY SAYS:

Why not a living Christmas tree? The Evergreen's year round beauty is most appreciated at Santa time.

We can't play Esquimo and pick flowers in the winter, but we can delight in the conifers green in the border, lawn or foundation planting.



And don't forget that good evergreens are the most expensive of all plants to produce. Good trees satisfy. Cheap, bargain evergreens are ever a source of disappointment. Play safe. Plant Daniels Evergreens.



A Perpetual Perennial Garden

7 Beautiful varieties.
21 Splendid plants.

A charming perennial border that furnishes an abundance of bloom from early spring until late fall.

3 Boltonia latisquama	\$0.60
3 Buttercup60
3 Golden Glow60
3 Fall Daisy60
3 Physostegia60
3 Iris60
3 Pentstemon60

Catalog value \$4.20
Special collection price only..... 3.50

The roses ordered from you came to hand in good shape and as I am told they were exceptionally good and vigorous plants. This letter is being written to thank you for the attention given my order. Wm. W. Norton, Winona, Minn.

April 24, 1929.

A Charming Rose Garden



All strong, first size No. 1 plants. 2-year—Field grown.

1 Crimson Bahy Rambler	\$0.75
1 Paul Neyron (H. P.)75
1 Frau Karl Druschki (H. P.)75
1 Gruss an Teplitz (H. T.)75
1 Princess Adelaide (Moss Rose)75

Catalog value.....\$3.75
Special collection price only..... 3.00



DANNY SAYS:

No foolin'—the whole family will be plum joyful about this "Lucky 13" Collection, for it means two months of the sweetest, juiciest, finest plums they ever tasted, and every year, too.

SATISFACTION IS WHAT YOU WANT!

We do not consider any sale complete until the customer is truly satisfied. When you buy from **THE DANIELS NURSERY**, you are assured of getting:

1. Varieties of the best of their classes for the Northwest—and hardy, northern grown.
2. Plants that are carefully grown, handled and packed so that they reach you in perfect condition.
3. Plants that are priced right. Fair, safe prices—and low, very low, for the quality offered.
4. A real helpful service goes with all our plants—and it's yours for the asking.
5. Our "Satisfied Customer" policy means just what it says—we guarantee you satisfaction, and we treat you right. This is the way our customers feel about us:

"I can't recall a year when we haven't bought some nursery stock and I can safely say that no nursery stock purchase of ours looked as healthy, sturdy and thrifty as the stock received from you today. The surest way I know of expressing my appreciation is to send another order immediately." Frank W. Winterling,

Downing, Wis., April 16, 1929.

"I want you to know what a pleasure it is to deal with a firm so honest and willing to do the right thing by their customers." F. Pesheck,

Sauk Center, Minn., Feb. 11, 1929.

"I wish to thank you most sincerely for the very fine trees you sent. They arrived in fine shape. I will sure hoost for The Daniels Nursery whenever I have the chance, for you fellows sure treat your customers right." Nuel L. Olson,

Cottonwood, Minn., May 22, 1929.

"Our June herries that we got from you last year sure look fine. You are a fine and fair company to deal with and I recommend you to all my neighbors that are going to buy nursery stock." George M. Pinkham,

Ogilvie, Minn, June 22, 1929.



DANNY SAYS:

"Painting the clouds with sunshine" may be "the thing" according to popular song—but far more satisfying and profitable is painting the home landscape with Daniels Dependable Ornamental Plants.



Daniels Famous "Lucky 13" Collection

10 Plums—Assorted varieties.
3 Cherries.

13 trees in all. Extra large, bearing age trees. 2 months of fruit, plenty to eat, plenty to can.

AN UNPARALLELED VALUE

10 trees of the best plums, including Underwood, Tonka, Red Wing, Monitor, Elliot and La Crescent. 3 hardy cherries, the Northwest's best—Zumhra, Nicollet and St. Anthony. 13 trees in all—Extra large, bearing age.

Special collection price, only.....\$10.00

I have a nice assortment of plum trees I got from you three or four years ago and have had two or three nice crops of the finest plums on earth, not excepting California or any other place. O. A. Weiss,
Minneapolis, Minn., April 15, 1929.

Five Finest Grapes



A VINEYARD OF JOY—
for
EATING — JELLY and
JUICE.

Strong 2-year No. 1 plants.

1 Concord—Blue black	\$0.25
1 Delaware—Red35
1 Niagara—Green35
1 Beta—Black25
1 Alpha—Black30

Catalog value\$1.50
Special collection price only..... 1.25

THE NEW MINNESOTA PLUMS

"Pinch me and wake me up—or am I really in Minnesota instead of California?" "Wonderful! Such size, such crisp, juicy flesh and such tantalizing, palate tickling flavor!" These and similar praises are typical of the remarks we get as we take visitors through our large bearing plum orchards.

A few years ago—yes, very few—no one dreamed that fruits like these could be grown except on the Pacific coast. But now, thanks to the clever plant wizards of our State Fruit Breeding Farm, these tested and proven plums are being grown successfully throughout the entire Middle West and are rapidly spreading out so that even in other sections where their remarkable hardiness is not of such great value, they are rapidly replacing older standard varieties.

Wouldn't you like to enjoy the pleasures of stepping into your own yard or orchard to pick your fill of these large, luscious plums of such intriguing flavor? And maybe the kiddies wouldn't enjoy them, right off the tree—bursting full of juice, vitamins and pep.

No, not for just a week or ten days either! If you'll plant early, mid-season and late varieties (and one really should) your plum joy will be lengthened out way beyond the conventional plum limits to 6, 7 and sometimes 8 weeks of delicious tree ripened fruits—the finest eating, canning and market plums grown. Speaking of market, the new Minnesota varieties we offer on these three pages have opened up a new type of commercial orcharding for the North—real moneymakers that start paying big profits soon after planting. They have already proven their worth on a large commercial scale.

Good stock is the foundation of success in growing these plums, whether in a small home planting or a large commercial orchard. Daniels trees are good trees and everything that the word implies—true to name—well grown—large tops and roots—carefully handled and packed—guaranteed to bring you satisfaction.

An order sent us now is the best way to fulfill your plum dreams—soon—annually and well.



PRICES OF DANIELS QUALITY PLUM TREES:

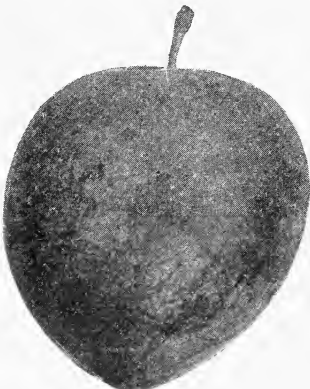
	1	12	100
Large 4½ to 6 feet.....	\$0.75	\$ 7.50	\$55.00
Standard 3½ to 5 feet.....	.65	6.50	50.00
Mail Order (postpaid).....	.50	5.00	35.00
Extra Large Bearing Age trees.....	1.00	10.00	75.00

UNDERWOOD

The One Best All 'Round Plum

The best of them all—if one plum can be so singled out. Very early. Large size and entirely hardy. Rich, red skin and firm, juicy, golden flesh. Its unsurpassed flavor has made Underwood an outstanding favorite with everyone. Extreme hardiness is one of the crowning virtues of its splendidly formed, well branched "clean cut" looking tree. Commercial growers find this the most profitable of all the plums for it brings the highest prices of the entire plum season.

I had better not say any more, for already my mouth is watering and I'm getting "homesick" for the joyous plum days of late July and early August when Underwood ushers in the season.



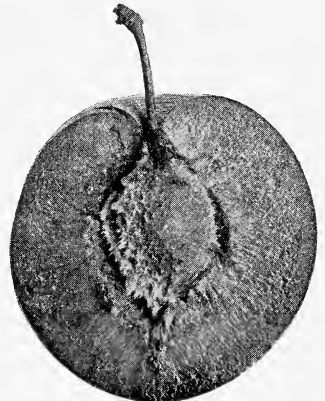
Underwood.

Tonka

The Earliest, Heaviest Producer

For heavy early bearing no plum tree can beat Tonka. Large two-year-old trees frequently bear in the nursery row. In describing this variety Professor W. H. Alderman of University Farm says—"The large, round, attractively colored fruits are not only firm fleshed and excellent shippers but are marked by delicious quality as well."

The fruit is large and an attractive bright red color. The pit is small and being entirely free stone is easily removed, an excellent point in canning. The flavor is sweet and quality good. The tree is hardy, of medium size, vigorous and one of the heaviest and most reliable producers known. Should be in all home and commercial plantings. Red. Mid-season.



Tonka.

Red Wing

Surpassing Size, Appearance and Quality

Peel 'em, flip out the pit and slice for cream and sugar! That's what folks who really know the high quality of a tree ripened Red Wing will do.

Red Wing is one of the largest of the plums—early fruiting. A heavy and regular bearer and so hardy that they are being successfully fruited as far north as Winnipeg. A really valuable plum that should be in every orchard. Red. Free stone and mid-season.



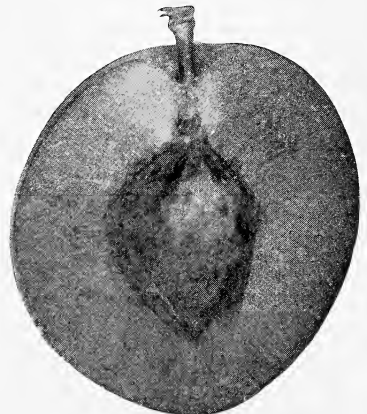
Red Wing.

Monitor

Quality and Size We've Sighed For

If blue ribbons were being passed out Monitor would be sure of three, yes four. One for a vigorous strong tree; one for heavy production, another for being an excellent shipper and still another for delicious quality.

Monitor's large sized, splendidly formed tree deserves a place in every home orchard. Because of its regular heavy production and the splendid keeping and shipping quality of its fruits, it is an outstanding favorite in the commercial planting. Splendid quality. A fine tree, a fine fruit, a fine seller. Red, slightly russeted. Late mid-season.



Monitor.



DANNY SAYS:

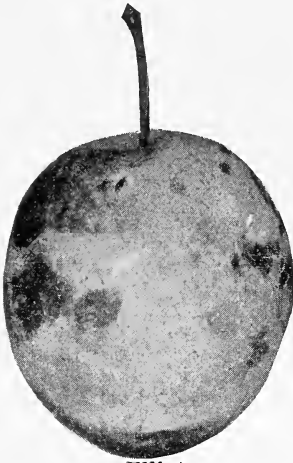
Are you asleep at the switch? These new Minnesota plums are as far ahead of the plums of 10 years ago as the modern locomotive is advanced over the old "puff-puff" of 50 years ago.

Elliot

Large, Late Season Sensation

It would be hard to improve on Elliot for a late plum. The fruit is large and an attractive bright, clear red color. The flavor is pleasant and the quality good. The pit is free or nearly so.

The fruit stands up well after harvest, an important market point. The tree is a vigorous grower of moderate size, very hardy and a heavy, regular producer. No home or commercial planting is complete without Elliot. Red. Freestone. Late.



Elliot.

La Crescent

Quality Supreme

Ever have the fun of eating a ripe Apricot? Then you have a fair idea of how really good La Crescent is and why it is considered the most delicious of the plums. La Crescent's beautiful yellow skin, overlaid with a delicate pink blush makes it as pleasing to the eye as it is to the taste.

The medium sized fruit ripens earliest of all our varieties, in late July and early August. The tree is splendidly formed and very hardy. Freestone. Yellow. Early.



La Crescent.

Golden Rod

The Biggest Yellow

The Northwest's largest yellow plum of merit. Firm enough for market. Dessert quality only fair and of importance primarily for cooking. Clingstone. An excellent keeper. Tree large, vigorous and hardy. Late.



Golden Rod.

Radisson

Large, Luscious, Lucrative

Radisson, ripening ahead of all of the leading varieties of plums, combines the best in size, coloring, quality and hardiness. The fruit is large, attractive red, ranking with La Crescent in quality. Hardy in all parts of Minnesota. Coming as it does, a week in advance of Underwood it commands a high market

price and lengthens the season of plums which top the market. Radisson is essential to all home and commercial plantings. Extra early.

Special BEARING AGE TREES Special

Extra Large—Ready to Fruit

For those who want quickest results

Many of you have asked us at some time or other for extra large trees that will bear fruit in the shortest possible time. To supply your wants we have grown a block of fine, two-year-old trees. Some of these have already blossomed in the nursery row, most of them have fruit buds now and should bear some fruit this summer. Without exception they should produce fruit next year. If you want the largest, finest trees available, big roots and heavy tops that will be the envy of the neighborhood and that will bear for you almost immediately order DANIELS EXTRA LARGE, BEARING AGE TREES.



Daniels Hardy Cherries for the Northwest

Nicollet

At last we can grow cherries in the cold North. Into these splendid new varieties has been bred the hardiness and heavy early bearing characteristics of their sand-cherry parents together with the high dessert and canning qualities of their true cherry ancestors. We offer this year an especially fine stock of these valuable new varieties at pleasingly low prices.

PRICES FOR ALL CHERRIES

	1	12	100
First size	\$0.75	\$ 7.50	\$55.00
Second size65	6.50	45.00
Mail order size (postpaid)50	5.00	35.00
Extra large, bearing age trees	1.00	10.00	75.00

Nicollet

O Boy! A Real Cherry!

Now, right in your own yard, you can grow pie and sauce cherries, the equal of any sour cherries grown in other parts of the country. Describing Nicollet, Professor W. H. Alderman of the University of Minnesota says, "It closely approximates the true sour cherry in size, color and general appearance," and that in sauce and pies "It is almost indistinguishable from the sour cherry."

You don't need an "orchard" to grow cherries for the small size, attractive form, foliage and color of these cherry trees will make them valuable assets to any ornamental border. For real cherry pie, plant Nicollet.

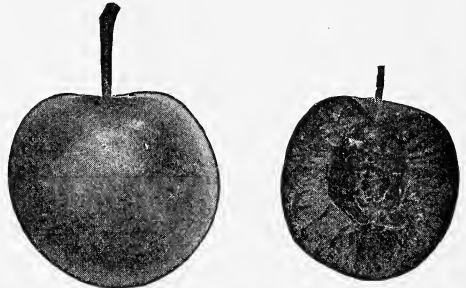
Zumbra

A Corker for Cooking

This year we harvested between 30 and 40 acres of fruits of all sorts, berry, vineyard and orchard crops, so you see we have the choice of everything we want for canning but each year Mrs. Daniels cans more of Zumbra Cherry than all other fruits put together. They're so easy to eat—and so easy to can too!

The rather dwarf trees are vigorous growers and tremendous bearers, and they fruit so early. Plant this spring and you should pick several quarts of fruit next year.

They're black outside, green inside, have a tiny cherry pit—and when fully ripened are positively delicious. Hardy in the far North. Put Nicollet and Zumbra together for best pollination. You really should have them in your plantings. You'll like them both!



Zumbra.



St. Anthony.

St. Anthony

The "Royal Purple" of Cooking Cherries

Rich, purplish red cherry sauce! Delicious, crisp fleshed cherries swimming in a deep crimson purplish juice! That's St. Anthony sauce; and if you don't think it's worth having, I miss my guess. Vastly superior in quality to the old short lived Sapa cherry plum.

St. Anthony makes one of the best trees of the cherry group, bears young and loads up to full capacity every year. Easily the best purple fleshed cherry.

DANIELS HARDY APPLES

Apples—famed for health giving qualities—dear to the hearts of all who as youngsters have grown up with fruiting apple trees in their “play realm,” beautiful as ornamental trees, productive of delicious food of high economic value, endeared to the housewife because of their various culinary adaptations, hardy and easy to grow! It is easy to see why the apple is the favorite and most widely planted of all fruit trees.

Daniels apple list comprises only the very best, those most widely and officially approved of, those really suited to the Northwest. Every one is important in its season, whether it be summer, fall or winter. You'll find the three newer varieties we list, Daniels Red Duchess, Dolgo and Haralson, really worth while, ones you can ill afford to be without.

Our trees are well grown, with large roots and strong 2 year, 4½ to 6 ft. well branched tops, the best size for planting here in the Middle West. You'll be delighted with them and the way they'll grow for you.

Prices (except as noted), 75c each; \$7.50 for 12; \$55.00 for 100.

Extra large, specially selected trees, 5 to 7 ft., \$1.00 each; \$10.00 for 12; \$75.00 for 100.

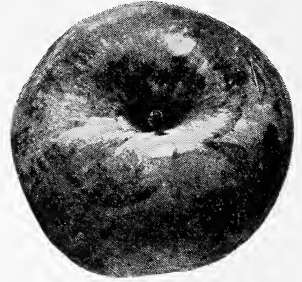
DELICIOUS—Described by Luther Burbank as “a gem, the finest apple in the world.” Can not be too highly praised. Large, deep, luscious red, flesh of splendid texture and of the very finest quality. One of the best winter keepers whose true worth is best appreciated on a cold winter night when apples of such high dessert quality are so hard to get. Season, November to April.

DOLGO CRAB—Dolgo is generally conceded to be the most beautiful of all apple trees. It is heavily laden with large white flowers at blossom time, and later the brilliant red fruit is borne freely in beautiful rope-like clusters, among dense foliage of vivid, dark green. The fruit is oblong in shape, of rare beauty and has a very unusual lemon-like flavor. Far superior to other crabs for jellies, producing a transparent bright red jelly of high quality. Will jell even when dead ripe. In praising Dolgo the Country Gentleman, January, 1929—page 126—says: “This variety is the most striking in appearance of any of the newer crabs tested at the Ohio station.” When in full bloom the tree is very decorative, and again in early fall when the fruit is ripening the high color of the fruit makes this tree worth while just for ornamental purposes. The quality of the fruit for jelly and preserves is excellent. Prices: 2-year trees: \$1.25 each; \$12.50 for 12. 1-year whips: \$1.00 each; \$10.00 for 12.

DANIELS RED DUCHESS—The best early red apple—See page 30 for detailed description.



Florence.



AN EARLY BEARER



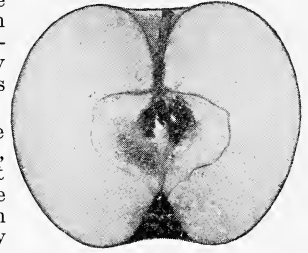
Daniels Red Duchess
Bears Even in the Nursery Row.

Few apples bear at such an early age as DANIELS RED DUCHESS. The accompanying photo was taken by Mr. J. D. Winter, Minnesota's Chief Deputy Nursery Inspector, on August 30, 1927. It shows a small tree in one of our nursery rows bearing a full sized DANIELS RED DUCHESS apple with its characteristic even, brilliant red color. This habit of early bearing is one of the variety's many outstanding points of superiority.

DUCHESS OF OLDENBURG—This has been the best known and most generally satisfactory of the early apples for the Northwest. Our new Daniels Red Duchess is vastly superior to this variety however, and should be planted in preference to it. Season, late August and September.

FLORENCE CRAB—The best all-around crab for general purposes. The eminent horticultural authority, Professor V. P. Hedrick, says: “Florence is remarkable for the beauty and high quality of its fruit and fruitfulness of its trees—desirable in every way as an early crab for either home or market plantations. Blights very little.”

HARALSON—At last you can have a hardy red apple of fine quality that is a real winter apple. Haralson is Minnesota's only hardy, high quality, red, winter eating apple that will keep until late spring in ordinary storage. It has been correctly called the Northwest's best winter apple.



Haralson.

The tree is an upright grower with strong, wide angle crotch and branching system. It is a vigorous tree, very productive and resistant to fire blight. The fruit is about the size of a Wealthy, is borne at an early age and hangs onto the tree until picked. The fruit is an attractive red in color and good in quality. Entirely hardy. No home or commercial orchard is complete without Haralson. Season, January to April.

Minnesota Station Bulletin No. 230 in describing this variety says: "It leaves nothing to be desired as a cooking apple and is a pleasant dessert fruit during the middle and late winter." Haralson is now generally accepted as the Northwest's best hardy, red winter apple. Plant it freely.

Prices for Haralson Apples:

	1	12	100
2-year trees	\$1.00	\$10.00	\$75.00
1-year whips75	7.50	55.00
Mail order size (postpaid)60	6.00	45.00
Extra large, specially selected trees—5 to 7 feet	1.25	12.50	90.00

HIBERNAL—The hardiest standard apple known. Thrives in all parts of the state. Especially valuable as a stock for top-working. Long lived. Branches are unusually strong. A heavy annual bearer. Cooking apple. Season, September to November.

McINTOSH—One of the finest apples grown. Because of its brilliant deep red color, deliciously flavored, crisp, snow-white flesh and distinct, pleasant aroma, it is preferred to all other varieties by most people. Season, October to January.

NORTHWESTERN GREENING—The best and longest keeping of the greenings. A splendidly formed, bright green fruit. Should be in every orchard for, even in ordinary storage, they keep well all winter and in a good vegetable cellar sometimes on into the summer. Unexcelled as a cooking apple. One of the leading and most profitable commercial varieties in the southern part of Minnesota.

PATTEN GREENING—The best real hardy "Greening" for the Northwest. A strong, long lived tree and a heavy regular fruiter. Apples are large and well formed. An eating or cooking apple. Season, September to December.

WEALTHY—The best market and most popular home orchard variety in Minnesota. Fruit, medium to large; a beautiful red; flavor unexcelled. The Northwest's one best apple. Eating apple. Season, September to January.



Wealthy.

WHITNEY CRAB—One of the finest crabs for eating purposes. Good color. Crisp flesh and immensely pleasant flavor. A strong, upright grower.

YELLOW TRANSPARENT—Always welcome because it is the earliest of the hardy apples to ripen. Its beautiful, transparent yellow skin is often overlaid with a tinge of pink on the "sunny side." Hardy. Bears very young, good quality. Season, August.

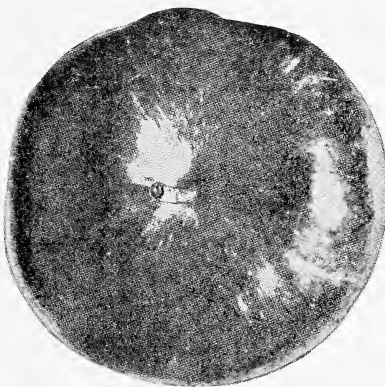
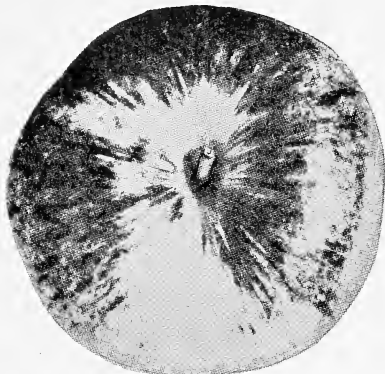
EXTRA LARGE
SPECIAL SPECIALLY SELECTED SPECIAL
APPLE TREES

For several years we have offered an extra large, bearing age Plum tree,—a grade which has been our heaviest selling size. We are glad to be able to offer you this year a corresponding grade of apple trees—especially selected, large, well formed, perfectly balanced trees—specimens that are worth far more than the slight extra price we ask. You'll be more than delighted with them!

The Daniels Red Duchess

Our \$1,500.00 Tree

A Remarkable Early Red Apple. An Improved Bud Sport of the Duchess of Oldenburg



Below:

DANIELS RED DUCHESS

Above:

ORDINARY DUCHESS

This photo reproduced from the Journal Series Paper No. 89, Minnesota Agricultural Experiment Station, shows the marked contrast between the even dark red color of the **DANIELS RED DUCHESS** and the streaked and splotched red and green of the ordinary variety.

The Daniels Red Duchess is an early red apple that seems destined to displace entirely the old Duchess of Oldenburg. It possesses all of the good qualities of the older varieties and in addition that all important, price commanding quality of high red color. Coming as it does at a season when there is a dearth of red apples on the market, it has proven itself a commercial variety of exceptional value. For the home orchard it is preferable to the old Duchess for everyone enjoys a highly colored red apple better than one without color.

The Daniels Red Duchess is not a new nor untried variety. The original tree stands in an exposed location near the Minnesota State Fruit Breeding Farm. It is about 26 years old, is in excellent condition and has always been a highly productive tree. For the past 15 years it has been under the observation of the staff of the Division of Horticulture of University Farm. Professor W. H. Alderman, chief of the Division, says: "It is unquestionably the most highly colored sport of the Duchess of Oldenburg known to be in existence. I can see no reason why commercial growers should continue to plant Duchess when this new sport is available in quantities to supply the demand."

The high red color of the Daniels Red Duchess sells it readily on the early market at a premium of from 50c to \$1.00 a bushel above other apples of the same season. It has been tested and tried in all parts of the country and has proven its superiority to the Duchess of Oldenburg wherever grown. A very early bearer. See page 28.

Six years ago we became so impressed with the variety that we purchased the original tree and all propagating rights from the owner for \$1,500.00 and we are now able to offer this remarkable variety in large quantities. Why plant the Old Duchess when the improved Daniels Red Duchess is available?

Large 4½ to 6 ft. trees, 2 year: \$1.50 each; \$6.50 for 5; \$15.00 for 12. Strong whips and lightly branched trees: \$1.00 each; \$10.00 for 12.



DANNY SAYS:

Color on the cheek makes a hit on the street, but color on the cheek of the early apple not only makes a hit on the market but brings home the \$\$\$\$. That's why leading commercial growers are planting Daniels Red Duchess now instead of the Duchess of Oldenburg.

Daniels Hardy Pears

May sound too good to be true—but it's a fact that we can now grow pears here in the North—good eating and good canning, too. We're doing it now—many, many others are, and you can, too.

Mendel Pear

25 Years Old and Has Not Blighted

Pears? Sure, you can grow pears in this climate now, and there are none you can plant with greater assurance of quick and satisfactory production than the Mendel. It is generally conceded to be the best pear for Minnesota and similar climates. The original tree stands in an exposed location at New Ulm, Minn., and has for 25 years, shown no winter injury nor trace of blight. The tree is a vigorous grower. The flowers are self pollinizing; the fruit hangs well to the tree, is of fine quality, sweet and juicy, and keeps well into November. The originator claims that the fruits of Mendel are fully as large as those of Bartlett and that it has proven a good producer for many years. Young trees of Mendel are bearing well throughout the southern part of Minnesota. Plant Mendel now and enjoy your share of this, the newest of fruits for the North! Probably Mendel is the safest of any pears yet introduced into the North.



Minnesota No. 1

Wonderful New Pear from the State Fruit Breeding Farm

This, Minnesota's new pear, originated at the State Fruit Breeding Farm, is considered one of the most promising for pear culture in Minnesota. It was grown from a seed brought from Manchuria in 1909 and has developed into a large, vigorous, free growing tree. The fruit is medium to large. The flesh tender, almost melting and the quality very good. In color it is yellow overlaid with a distinct blush. It is especially recommended for climates similar to Central and Southern Minnesota. Season, late September.

Prices for Daniels Quality Pears:

	1	12	100
2-year trees	\$1.25	\$12.50	\$95.00
1-year whips	1.00	10.00	75.00
Mail order size (postpaid)75	7.50	55.00

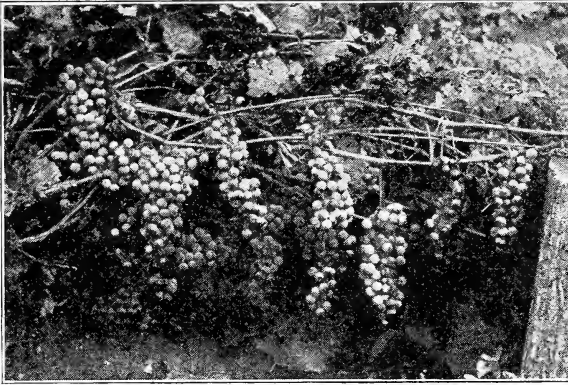


DANNY SAYS:

When insects, disease and pests beset us let's take a tip from that crafty little animal, known for its "scents," and as mother Skunk admonishes her children, gathered around her, "Let Us Spray!" For 50 gallons of water use 1½ lbs. Arsenate of Lead (Biting Insects). One-half pint Tobacco Extract (Sucking Insects) and five quarts of Lime Sulphur (Fungus diseases). Write us for further help in your spraying problems.

DANIELS GRAPES

Perennially Profitable



Beta.

is nothing better for covering a cozy old fashioned grape arbor.
 For dessert purposes one should choose varieties such as Concord, Delaware or Niagara, the most popular of the blue, red and green grapes respectively. These varieties do best when trained on a trellis.

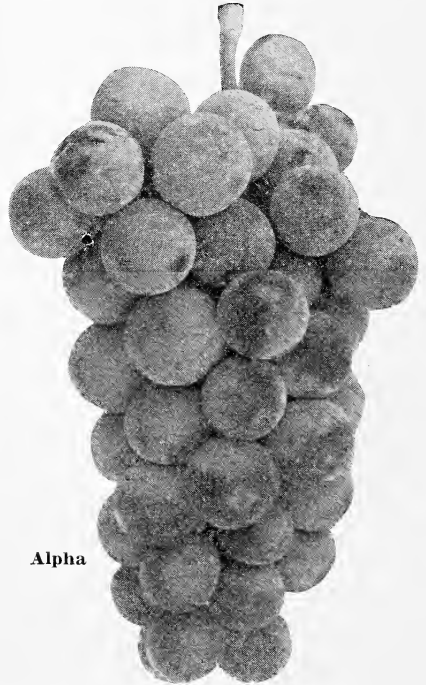
Fresh, ripe, juicy grapes, vine ripened and melting in the mouth; beautifully colored twangy jelly; pure grape juices, with the zip and zest that only grape juices can have. These are yours if you will but plant a few grape vines. You can select from the list given below varieties suited to any soil or to any location. The hardier varieties such as Alpha and Beta may be grown under any conditions that the hardiest wild grapes will endure. Instead of growing them in vineyard form on a trellis, they may be used as a screen, for covering fences, sheds or any place where an attractive screen effect is desired. There

Alpha

An Improved Beta

Although a more recent introduction than Beta, Alpha is forging rapidly to the front and is preferred to it by most of those who have grown both. It is one of the group of super-hardy grapes that has made commercial vineyard culture so popular and profitable in recent years. While Alpha is similar to Beta in size and appearance, and equal to it in hardiness and yield, it is commonly considered to possess much higher sugar content and much better flavor than Beta. Originated near St. Cloud, Minn. Alpha today stands as the most popular of the commercial grapes for Minnesota and the Northwest.

Prices: 1 12 25 100
 Strong 2-year plants \$0.30 \$3.00 \$5.50 \$20.00
 Mail order size, 1-yr. .20 2.00 4.00 13.50



Alpha

Beta

The Standard Hardy Grape

In the past Beta has been the most widely planted grape in the Northwest and for commercial purposes has proven highly profitable. Since its origination some years ago in Carver County, Minnesota, it has spread rapidly throughout the adjacent states.

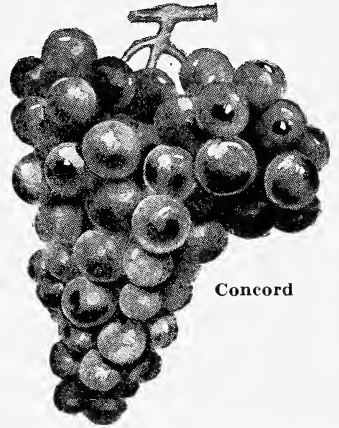
Yields from 1/2 to 1 bushel per vine have been obtained in well cared for vineyards. There has been a tremendous demand for a jelly and juice grape the past few years and those who have been growing Beta and Alpha have found their crops highly remunerative.

Prices: 1 12 25 100
 Strong 2-year plants \$0.25 \$2.50 \$4.50 \$17.00
 Strong 1-year plants15 1.50 3.00 10.00

Concord

The Most Popular Table Grape

Concord is the most widely grown and generally satisfactory of the dessert grapes. It is the standard for comparison for all other grapes. A vigorous grower and heavy producer of large, compact bunches of good sized blue-black berries of fine table quality. Concord is recommended in every way as one of the best table grapes for either commercial or garden culture. Strong 2-year plants, 25c each; \$2.50 for 12; \$4.50 for 25; \$17.50 for 100.



Concord

Delaware

The Finest Red Grape

Delaware is used, wherever American grapes are used, as a standard to gauge the quality of other grapes. In addition to its extremely high quality, this spicy red grape possesses the desired characteristics of vine and growth that makes it rank next to Concord as the most popular grape for vineyard or garden plantings in the United States. If you are looking for a beautiful, reliable grape of the very finest quality you will find that Delaware with its unequalled spiciness and sweetness will fill the bill. Strong 2-year plants, 35c each; \$3.50 for 12.

Niagara

The Leading American Green Grape

Niagara holds the same enviable position among grapes of this color that Concord holds among black varieties. Splendid quality. The vigorous growing vines are very productive, yielding large crops of big, handsomely formed, splendid green fruits. Every vineyard should have a few of these excellent green grapes. Strong 2-year plants, 35c each; \$3.50 for 12.

Daniels Brambles



Ancient Briton

ANCIENT BRITON BLACKBERRY—The extreme popularity of this splendid blackberry is well deserved for it is not only the hardiest of the better blackberries but is the best in quality. Plants are vigorous and very productive. Probably the best for home and commercial plantings in the North. \$1.00 for 12; \$1.50 for 25; \$4.50 for 100.

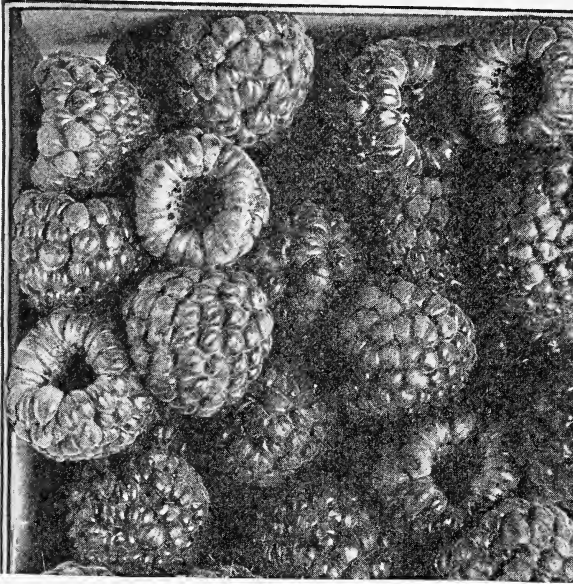
KING RED RASPBERRY—Mosaic Free. King has been the standard early red raspberry for many years. Our Mosaic free plants always give the highest satisfaction it is possible to obtain from this variety. Progressive growers are now planting Minn. No. 223 instead of King because with its larger, earlier season production and hardier plants it has proven its superiority to King. King prices, \$1.00 for 12; \$1.25 for 25; \$4.00 for 100.

GOLDEN QUEEN YELLOW RASPBERRY—Mosaic Free. The best of the yellows. A strong, vigorous grower and heavy producer of delicious berries, unsurpassed in quality. \$1.00 for 12; \$1.50 for 25.

Daniels Latham Raspberry

(Mosaic Free)

"The Country's Greatest Late Red"



Latham Raspberry (Natural Size).

the so-called No. 1 plants now found on the market.

Daniels plants reach you in perfect growing condition, full of pep and ready to give you the finest raspberry growth and productivity that you have ever seen. Wherever our plants have been used they have at once become the standard to which other raspberries have been compared.

Our plants are doubly inspected by the Minnesota State Nursery Inspection Service and certified to be free from Mosaic and other serious diseases. Daniels Latham plants do not "run out." Our low prices afford the growers a real opportunity to establish a long lived, profitable raspberry planting at small cost. Prices: \$1.00 for 12; \$1.50 for 25; \$4.50 for 100; \$35.00 for 1,000.

Expert Testimony Proves Value of Latham

Professor C. P. Close, Extension Horticulturist, U. S. Dept. of Agriculture, Washington, D. C., says: "It is hardy, productive, reliable and fills a place that no other variety can."

Professor H. L. Lantz, Iowa Agricultural Experiment Station, Ames, Iowa, says: "I believe we could well afford to dispense with all other red varieties and plant Latham exclusively, and be money ahead in Iowa."

U. S. Farmers Bulletin No. 887, "Raspberry Culture," in speaking of Latham Raspberry, says: "Where this has been tested east of the Rocky Mountains it has proven to be the most productive raspberry."

The Connecticut Agricultural College Review, September, 1925, reports the yields of Latham as "10,860 pints per acre"—40% more than that of any other variety.

Our Customers Prove the Value of Daniels Plants

You will remember that this Spring I purchased from you 1,000 of your Latham red raspberry plants and I am writing to tell you how well pleased I am with them. Nearly every one grew and several bore this year. I have picked in the neighborhood of a gallon already and there are still several green ones on the bushes. Many of the berries are very large and as pretty as any catalog picture you ever saw.

A. Lee Pray,
LeRoy, Illinois.

Regarding the Latham plants ordered from you will say that I am well pleased. Your liberal count and high quality plants have given me nearly 100% stand.

C. M. Kelly,
Beaver City, Nebraska.

The Latham plants I got from you have done fine. Everybody who saw the berries last summer said they were the largest that they had ever seen and they certainly were the best I ever saw.

S. C. Nelder,
Pine River, Minn.

I'm sending all my nursery orders to you. The Latham raspberry plants I got from you two years ago had berries on last year. I am well satisfied with your stock and will order more when I need it.

Mrs. Fred Etchen,
R2 Goodell, Iowa.

MINNESOTA NO. 223

(Mosaic Free)

(To be named this Spring)

WONDERFUL NEW EARLY RED THE MOST VALUABLE EARLY RED RASPBERRY YET INTRODUCED

Raspberry history is being made rapidly. A few years ago the Minnesota State Fruit Breeding Farm introduced Latham raspberry as the Minnesota No. 4. Latham is now known throughout the country as the finest and most profitable late red raspberry ever introduced. Indications now are that Minnesota No. 223 will enjoy the same popularity as an early berry that Latham does as a late variety. So certain of its tremendous value are its originators at the Minnesota State Fruit Breeding Farm that now, as this catalog goes to press, a contest is being conducted which will terminate in the naming of this wonderful new berry. Naming it is the final stamp of approval, the official O. K. of Minnesota's highest Horticultural authorities and their final declaration that they consider this variety the finest early red raspberry in existence.

EARLIER—HARDIER—MORE PRODUCTIVE

Minnesota No. 223 is a week or ten days earlier than Latham, ripening at a season when it will bring the highest market price. The berry is a beautiful dark red color, firm, non-crumbling, of good size and of the finest quality, supreme in this respect to other leading commercial sorts.

The plant is a strong, vigorous grower with healthy dark green foliage that has shown immunity to mildew and an almost complete resistance to Mosaic and similar dreaded diseases. It has proven to be hardier even than Latham and does well throughout the entire Northwest without extra care or winter protection. And, best of all, it is a tremendous yielder. Up to this time Latham has been the heaviest yielding raspberry east of the Rockies, but in carefully controlled tests at the State Fruit Breeding Farm, Minnesota No. 223 has outyielded it by from 13 to 50 per cent. This one factor alone makes it of inestimable value.

For the home gardener this variety means a much earlier and longer raspberry season and a sweeter, finer, richer quality berry than has been available ever before in a hardy variety. For the commercial grower it means infinitely larger profits because of the increased yield and high prices—the cream of the early market prices. For both growers, it means in addition, lower production cost and greater certainty of crop because of its superior hardiness and elimination of trouble from disease.

THE IDEAL HOME AND COMMERCIAL BERRY

Truly, Minnesota No. 223 seems to be the ideal raspberry; the berry of unsurpassed merit for both the home and commercial grower. Yes, the berry of your dreams! Until you have grown Minnesota No. 223 you will not have known complete early red raspberry satisfaction.

We are fortunate in having one of the largest stocks of this variety in existence but because of the tremendous demand there is for it we urge that you send your order in as early as possible so that you will not be disappointed. Our plants have been carefully inspected several times by the State Nursery Inspection Service and are guaranteed to be absolutely true to name and free from serious diseases.

At this time Minnesota No. 223 offers the raspberry grower an opportunity that is really unusual. We cannot recommend too strongly that you establish at least a trial planting this year and suggest that the far sighted grower establish a generous planting that he may reap the large profits that No. 223 is bound to bring. **\$3.00 for 12; \$5.00 for 25; \$17.50 for 100.**



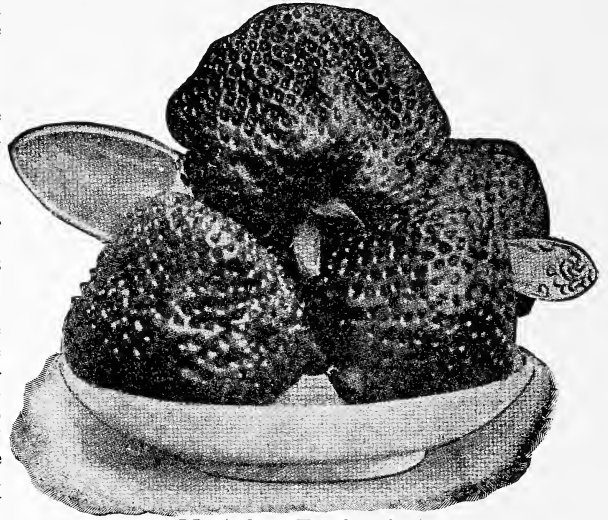
DANNY SAYS:

High honors for 223! The "Authorities" have deemed it worthy of a name and are using one of the people's choosing. As soon as the high quality of 223 is better known it will become the raspberry of everybody's "chewing."

Daniels Quality Strawberries

Sure to Grow—Sure to Bear

Daniels hardy, northern grown strawberry plants have been produced on specially selected and prepared soils to meet the needs of the planters here in the Northwest. The most exacting care is exercised in every step of their growing, digging, handling and packing. When you buy Daniels plants you are buying strawberry satisfaction. Situated as we are, we can get plants to all parts of the Northwest in perfect growing condition within a few hours from the time they are carefully dug from our large fields. The commercial grower who is looking for big profits and the home gardener who wants a dependable supply of large, luscious, fresh berries are both assured of satisfaction when they use Daniels Hardy Plants. Add 10c per 100 if to go by mail.



Mastodon (Everbearing)

MASTODON

The Greatest Everbearer

This immensely popular new variety is conceded to be the greatest everbearing variety of strawberry yet introduced. A veritable Mastodon in size. Positively delicious in flavor and a heavy yielder both in the June crop and throughout the late summer and fall. Stands head and shoulders above other known everbearers!

We have never before grown an everbearer that produced such large fruits both in the spring and fall or so consistently produced them in such quantities.

Truly Mastodon seems to be the ideal Everbearing Strawberry, the variety every gardener has dreamed about and longed for. It is undoubtedly the most profitable of any of the everbearers. **\$1.00 for 25; \$2.50 for 100; \$22.50 for 1,000.**

Mastodon's Ten Points of Superiority.

- | | |
|--|--|
| 1 Extra Large Size. | 6 Good Market Berry. |
| 2 Tremendous Production. | 7 Largest Spring Crop of any Everbearer. |
| 3 Good Color and General Appearance. | 8 Vigorous Grower and Plant Maker. |
| 4 High Quality. | 9 Healthy Foliage. |
| 5 Earliness Both in Spring and Summer. | 10 Most Profitable. |



Progressive

The Standard Everbearer

Of all the older everbearing varieties Progressive stands as the most generally satisfactory. It is adapted to all soils and climates. Is a strong grower and a heavy yielder of very high quality berries and is one of the earliest fruited both in spring and fall. Daniels Progressive plants are of an especially selected high yielding strain that produces tremendous crops of berries, surpassing most other Progressives in size. **90c for 25; \$1.50 for 100; \$13.00 for 1,000.**

PREMIER. Early. Aptly described as the one strawberry without a fault. Although nearly a week earlier than Dunlap, it maintains a heavy production over a long period. The firm, bright red berries maintain large size well throughout the season. Because of its "frost-proof" qualities a Premier crop failure is practically unknown. The most popular early and mid-season berry. 75c for 25; \$1.25 for 100; \$10.00 for 1,000.



Premier

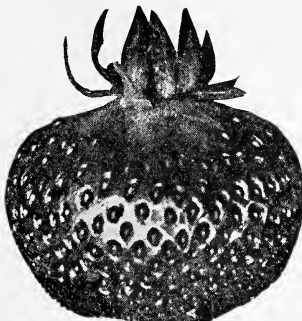
BEAVER. Early. Beaver has been called a "worldbeater." A recent introduction of outstanding merit, commonly heralded the most promising of the June bearing varieties. For several years it has surpassed all standard varieties in most sections where tried. You will be interested in the good points claimed for it—Several days earlier and easier to pick than Premier—Good shipper and general market berry—Good color, inside and out—Large—Holds its size well to the end of the season—Equal to Dunlap and Premier in quality—Very heavy yielder—Plants are vigorous and healthy—Splendid plant maker—Hardy. Looks like the best all around June bearing variety to date.

If you are interested in a good strawberry, try Beaver. 90c for 25; \$1.75 for 100; \$15.00 for 1,000.

DUNLAP. Mid-season. Dunlap needs no introduction as it is the best known and most widely grown strawberry in the northern and eastern half of the United States. It is an equally good market or home garden berry, well adapted to all types of soils. 60c for 25; \$1.00 for 100; \$9.00 for 1,000.

CHASKA. Early mid-season. A popular Minnesota introduction. The large, dark, glossy red berries are of good quality, are produced abundantly and are firm enough to be good shippers. 75c for 25; \$1.25 for 100; \$10.00 for 1,000.

EASYPICKER. Mid-season. Imperfect. Another Minnesota origination that because of its many splendid qualities is rapidly increasing in popularity. The medium to large fruit has dark red flesh throughout and is entirely lacking of "core" at the center. A heavy fruiter



Easypicker

and easy to pick. Quality of the highest. An unexcelled home garden berry. Plant with another variety for pollination. 75c for 25; \$1.25 for 100; \$10.00 for 1,000.

NOKOMIS. Mid-season. One of the largest, heaviest yielding of the Minnesota introductions. A splendid home garden berry because it is unequalled as a heavy producer of large, high quality fruit. 75c for 25; \$1.25 for 100; \$10.00 for 1,000.

MINNEHAHA. Late. The best late, June bearing variety for a shipping market, being one of the largest, heaviest producing, late berries known. This Minnesota creation has in recent years been an outstanding favorite with the commercial grower and an exceedingly profitable variety. 75c for 25; \$1.25 for 100; \$10.00 for 1,000.



Minnehaha

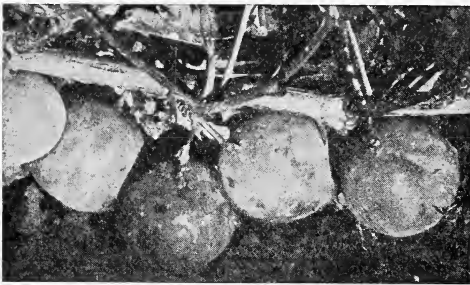
The Beaver Strawberry is becoming very popular in Wisconsin's largest growing sections, namely, Sparta and Warrens. The canning factory at Sparta urges all growers to plant nothing but Beavers for canning purposes. The Beaver is a good plant maker and especially adapted to sandier soils. On heavy rich soils Premiers are favored.

H. J. Rahmlow, Secy., Wis. State Hort. Soc., Madison, Wis.
Dec. 27, 1929

The Mastodon plants I bought of you last spring were very nice. The berries measured over two inches across, 6½ inches around. Bloomed fine.

T. J. Grant, Hubbard, Minn.
March 11, 1929.

GOOSEBERRIES AND CURRANTS



Como

Como

Minnesota's New Wonder Gooseberry

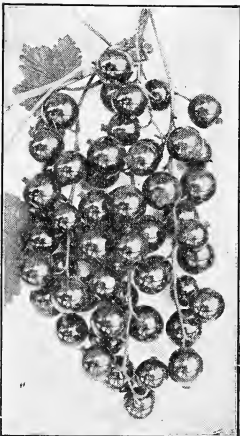
(Minnesota No. 43). Described by the originators, the Minnesota State Fruit Breeding Farm, as follows:

"A vigorous, productive plant with exceptionally healthy foliage. Fruit roundish or slightly oblong. Ripens green, quality fair, holds on the bushes a long time in good market condition without scalding, even in the hottest weather.

"The plant is only moderately thorny, many thorns dropping from the 2-year-old wood."

The advent of Como marks the greatest advancement made in mid-western gooseberry culture in many years.

Prices: \$0.35 each; \$3.50 per 12; \$6.50 per 25.



Perfection

Quarantine Notice:
Because of a new Federal Quarantine this season, we are not shipping currants and gooseberries to points outside of Minnesota.

Carrie

The "Thornless" Gooseberry

Carrie has been the most popular gooseberry in Minnesota and adjacent states in the past. It is a prolific yielder of good sized berries which ripen red.

Sometimes called the thornless gooseberry because the pricklers are lost from the wood after the first year.

We offer strong plants ready to fruit next year.

Prices: \$0.25 each; \$2.50 per 12; \$4.75 per 25; \$18.00 per 100.



Carrie

London Market

The Commercial Currant

The best Red Currant for most parts of the Middle-west. It is able to withstand hot, dry weather and is highly resistant to disease. A vigorous grower and prolific yielder of long, compact clusters of berries well filled to the tips.

Prices: \$0.20 each; \$2.00 per 12; \$3.75 per 25; \$13.00 per 100.

Perfection Currant

Supreme in Quality

Perfection is one of the best and finest of the currants and easily the outstanding one for home use.

The uniformly big berries which are borne on large, long stemmed clusters are a bright, clear red and of pleasing flavor that is superior to most other currants.

This variety won the Barry Gold Medal of the New York Horticultural Society, the Pan-American Exposition medal, and the gold medal at the St. Louis Exposition.

Prices: \$0.35 each; \$3.50 per 12; \$6.50 per 25; \$24.00 per 100.

Wilder Currant

For Currant Profits

One of the leading commercial varieties. Highly productive of fruits that are handsome, high in quality and hang long on the vine after ripening.

Prices: \$0.20 each; \$2.00 per 12; \$3.75 per 25; \$13.00 per 100.

PERENNIAL VEGETABLES

Mary Washington Asparagus

The Government's Rustless Asparagus

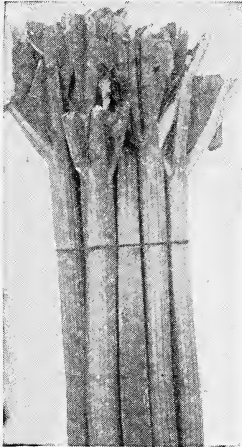
This giant asparagus, the result of years and years of plant breeding work by the U. S. Department of Agriculture, is everywhere admitted to be the finest asparagus now grown. It is even an improvement of Washington, a previous introduction by government experts. Mary Washington seems to be the ideal asparagus as it is rust-resistant and surpasses all other varieties in yield and quality. Its enormous tender shoots of vivid dark green color retain their tenderness and do not branch until well above cutting height. It has proven itself a tremendous producer and has been entirely rust proof. We offer 1, 2 and 3-year-old roots. The 3-year-old is especially valuable for establishing home plantings where quick results are wanted.



Mary Washington.

Prices:	12	25	100	1,000
1-year	\$0.75	\$1.25	\$2.50	\$18.00
2-year	1.00	1.50	4.00	25.00
3-year	1.75	3.00	8.00

Daniels Giant Victoria Rhubarb



Victoria

Victoria is probably the most widely grown and most popular kind of rhubarb. We offer strong root division plants from stock selected through a period of years by a market gardener for especially high quality and fine red coloring of the stem. These strong division plants that will produce uniformly tender, crisp stalks of an attractive, red color should not be confused with the low quality seedling roots so commonly offered by some nurseries. Root divisions—Prices: Each, 15c; \$1.50 per 12; \$3.00 per 25; \$10.00 per 100; \$70.00 per 1,000. By mail add 25c per 12. Large producing clumps—50c each; \$4.00 per 12. Clumps go by express only.

Girasole or Artichoke

Girasole, or Jerusalem Artichoke, as it is sometimes called, is a hardy perennial producing a root which is now coming into great popularity. This good little tuber somewhat resembles the potato in shape and texture, is rich in carbohydrates, and contains a large quantity of Inulin. In describing this vegetable Dr. D. N. Shoemaker of the U. S. Bureau of Plant Industry, says: "As a human food it offers a variation from potatoes and has promise in increase in its usefulness through its suitability for the diet of persons

affected with diabetes." The plant produces stalks about 8 ft. tall, topped with small "sunflowers." It is valuable for table use both raw and cooked. Prices: 5 lbs. for \$1.00; 10 lbs. \$1.50; 25 lbs. \$2.50; 100 lbs. \$7.50.

Mint

This fine, old-fashioned herb should be found in every garden. Perennially, throughout the season, it supplies the table with flavoring for sauces, jelly and beverages. Thoroughly hardy. Prices: Strong plants, 15c each; \$1.50 per dozen.

Chives

Chives or grass onion is a splendid little perennial. Thoroughly hardy. On the job all through the growing season, furnishing its slender leaves for garnishing or for adding a delicate flavor of onion to soups, salads or what have you? A dependable perennial that should be in every garden. 20c each; 40c for 3. \$1.30 for 12.

**DANNY SAYS:**

"It's not a home until it's planted!" A truth that is growing on all of us every day. Let us help you to realize more fully your dreams of a real home! We're at your service! Send us a sketch of your home grounds and we'll prepare a plan for your Outdoor Living Room and give you an estimate of the stock, free of charge.

Instructions for Ordering

WHEN TO ORDER. As early as possible. "First come, first served," is the rule. Early ordering is a big help to us, and frequently late orders can not be filled in full. Why not send your order in now? It will be carefully booked and shipped to you at the time you want it.

SPECIAL PREMIUMS. It is a great advantage to us to have orders reach us early, as the bulk of our business is crowded into a short period in the Spring. This means a heavy load on our office facilities. So that we may better organize our Spring work and as an inducement for our customers to place orders early, we are offering the following liberal premiums in the form of additional nursery stock for early orders. All orders with full cash payments, sent in before the dates indicated, will be entitled to a premium of additional nursery stock to the value indicated below:

Orders mailed prior to February 20, 1930—8%.

Orders mailed prior to March 1, 1930—6%.

Orders mailed prior to March 15, 1930—4%.

If you wish a premium be sure to specify the kind of stock wanted.

PRICES. Prices listed in this catalog annul and supersede all prices quoted previously. All prices are F. O. B. Long Lake, Minnesota, unless otherwise specified.

TERMS. Our business and moderate price schedule have been built on a cash with order policy, and we prefer to have your orders accompanied by cash in full. This plan enables us to keep down costs and to maintain low prices. If C. O. D. shipments are preferred, 20% must accompany the order, balance C. O. D.

RESERVE ORDERS. We will reserve stock for those who so desire upon payment of 10% with order.

METHOD OF SHIPPING. Express is safest and generally the best way to ship plants. Express orders are sent transportation charges collect. Many small orders may be shipped satisfactorily by Parcel Post. These will be sent postal charges C. O. D. unless proper amount is added to your remittance. Only small numbers of plants, and no trees larger than our mail order size can be sent by mail.

QUARANTINE. Because of a new Federal quarantine, we are not shipping currants or gooseberries to points outside of Minnesota.

COMPLAINTS. Any complaints will be taken care of promptly and satisfactorily. If there is anything wrong, let us know at once, while there is still time to make amends, for we want only satisfied customers.

REPLACEMENT. We will replace plants that fail to grow first year at one-half the purchase price, provided that such failure to grow is not due to neglect or improper handling on part of the purchaser. All replacement claims must reach us prior to October first of the fall following planting.

PLANTING INSTRUCTION GUIDE sent free at any time.

OUR GUARANTEE. We exercise the utmost care in labeling, packing and shipping our plants, and guarantee them to be true to name, and will replace free of charge any which prove to be otherwise. It is understood and mutually agreed between purchaser and ourselves that in no case will we be liable for more than the original cost of the plants. We can not be held responsible for inability to make delivery because of strikes, fires, acts of Nature, or any other cause beyond our control.

DANNY SAYS:

Write Plainly, Order Early, and Rest Assured That You Will Have the Best Plants That Money Can Buy. Send all orders to

THE DANIELS NURSERY

FRANC P. DANIELS, Prop.

Long Lake, Minnesota



THE MAIL MAN

hands us many, many letters from our friends. We're always glad to see them come. Here's a page of them—positive proof that our Satisfied Customer Policy actually makes satisfied customers:



April 16, 1929
I got the grapevines and Latham Raspberry plants. I never saw nicer or thriftier raspberry plants and I thank you for sending such good plants.

Mrs. Maria Harriger, R 3, Sligo, Pa.

April 17, 1929
I received the nice trees and Dahlia bulbs, I did not expect that. How can I thank you enough for everything. Thanks many, many times for them.

Mrs. Michael Jax, Adams, Minn.

April 23, 1929
Must write and tell you we were well pleased with the apple trees. They were larger and better rooted than we expected.

The strawberry plants we got from you last year did so well I am enclosing a check for more Premier strawberries.

W. L. Siemon, Belle Plaine, Minn.

April 29, 1929
I am enclosing picture of a mail order size Zumbra Cherry purchased in 1928. The youngster is holding a yard stick in his right hand, this will give you an idea of the size of the plant. I never saw so much bloom on a small tree in my life. It speaks well for Daniels nursery stock.

Fred R. Conkling, Manchester College, North Manchester, Indiana.

Feb. 25, 1929
Am enclosing order for 12 plum trees. Those I bought from you five years ago are doing well and bearing heavy.

Peter Rasmussen, Elkol, Minn.

Feb. 9, 1929
I ordered one Underwood and one Radisson plum from you three years ago this spring. The Underwood is a large tree now, beyond all expectations. Radisson was only a "whip" and is doing fine, but has not grown in proportion to the Underwood. It has many fruit buds this year.

Mrs. A. G. Osterberg, Milaca, Minn.

Dec. 2, 1927.
I think the Underwood plum the best we have so far in the state.

W. A. Thomas, Lincoln, Neb.

Lovely Bushes

April 20, 1928.
The nursery stock arrived today. They are lovely bushes.

Dr. Walter L. Zettler, Mankato, Minn.

Plums are Prize-Winners
Received Tonka, Underwood, Red Wing and Winona from you. They bore their first crop in 1926. Got first premiums at Mower County Fair in 1926 on these plums. Red Wing and Tonka measured 3x3 1/4 inches in diameter.

Martin J. Halverson, Austin, Minn.

Trees Arrive in Fine Condition

April 23, 1928.
The trees you sent me arrived in fine condition. They are lovely trees.

Mrs. John Wilson, La Moille, Minn.

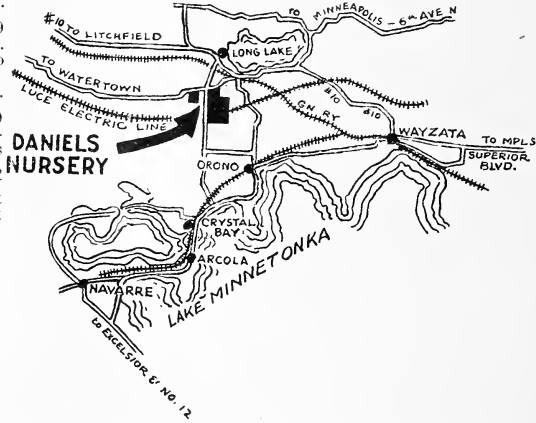
Fruit Finest Ever Tasted

March 21, 1928.
This photo shows you that I am well satisfied with the trees. The fruit is excellent, finest I ever tasted or saw.

Henry Busegens, Shakopee, Minn.

AN INVITATION

You are invited to visit our Nursery. We adjoin the village limits of Long Lake, Minnesota, which is 16 miles West of Minneapolis on State Highway No. 10.



DANNY SAYS:

If you will write below the names and addresses of your friends whom you think would like a copy of our catalog, we will see that they receive one promptly.



Name	Name
Address	Address
Name	Name
Address	Address

You Have an Outdoor Living Room Why Not AN «OUTDOOR PANTRY»?

Here are 3 fine "Shelves" for Your
"Outdoor Pantry."



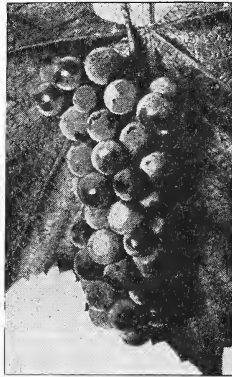
Plums

**3 Fine Plums,
Bearing Age Trees**

- 1 Underwood
Early
- 1 Red Wing
Mid season
- 1 Monitor
Late.

Catalog value **\$3.00**

Special collection
price **\$2.50**
only.....

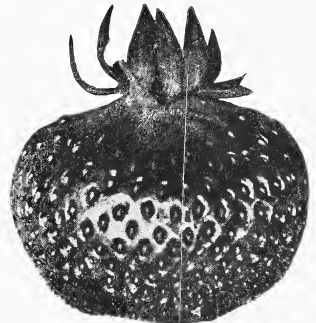


Bush Fruits

**A Complete Home
Assortment. The
Finest Varieties**

- 25 Latham Red Rasp-
berry.
- 25 Ancient Briton
Blackberry.
- 4 Como Gooseberry.
- 4 London Market
Currant.
- 2 Alpha Grape.
- 2 Beta Grape.
- 2 Concord Grape.

Catalog value **\$6.80**
Special collection
price **\$5.75**
only.....



Straw- berries

**100 Fine Plants
Four Varieties.**

- 25 Mastodon everbear-
ing.
- 25 Progressive ever-
bearing.
- 25 Easypicker.
- 25 Premier.

Catalog value **\$3.40**

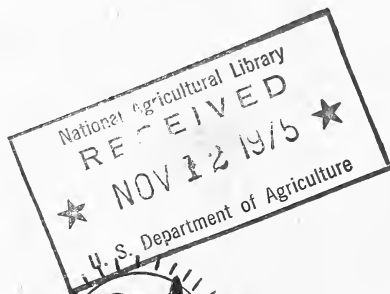
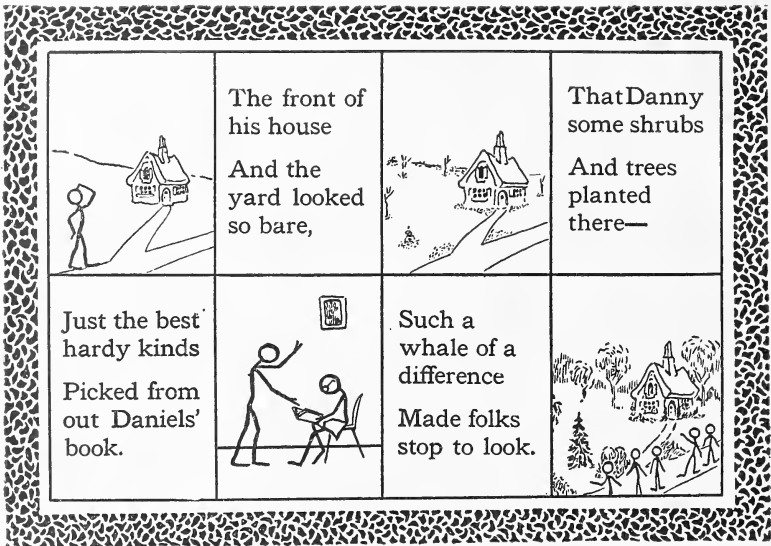
Special collection
price **\$2.25**
only.....



DANNY SAYS:

*You may not have your choice in all things but
in your own "Outdoor Pantry" you may take your
"pick." Then, as the story goes, eat all you can
and what you can't eat you can.*





THE DANIELS NURSERY
Long Lake Minnesota